

IDWP meeting
London 2013



WORKFLOW

How to start
and develop a
project with
IDWP



Available guidelines

Contact S. Cesaro

(simone.cesaro@ospedaleuniverona.it) or the Data Office Leiden (Jennifer Hoek; idwpebmt@lumc.nl)

➤ Table of tasks in the workflow

- Describing what is done at each phase of a project by:
 - Principal Investigator (PI)
 - Study Coordinator (SC)
 - Statistician (S)
 - WP Chair (WPC)

➤ Guidelines for external statistical collaborations

Workflow: phases

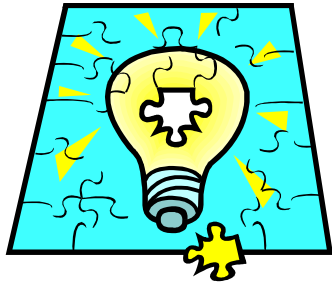
1 - planning



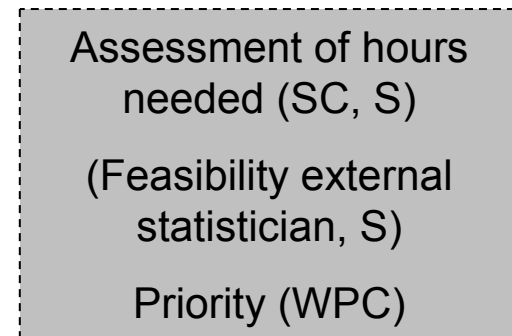
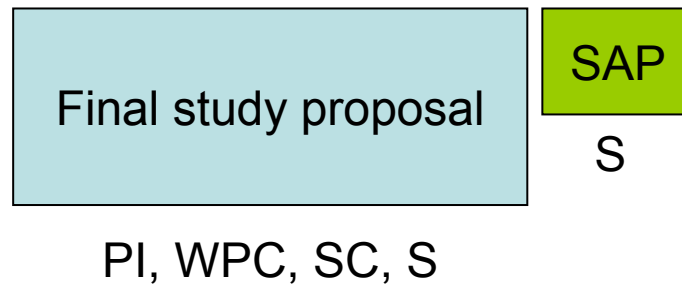
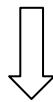
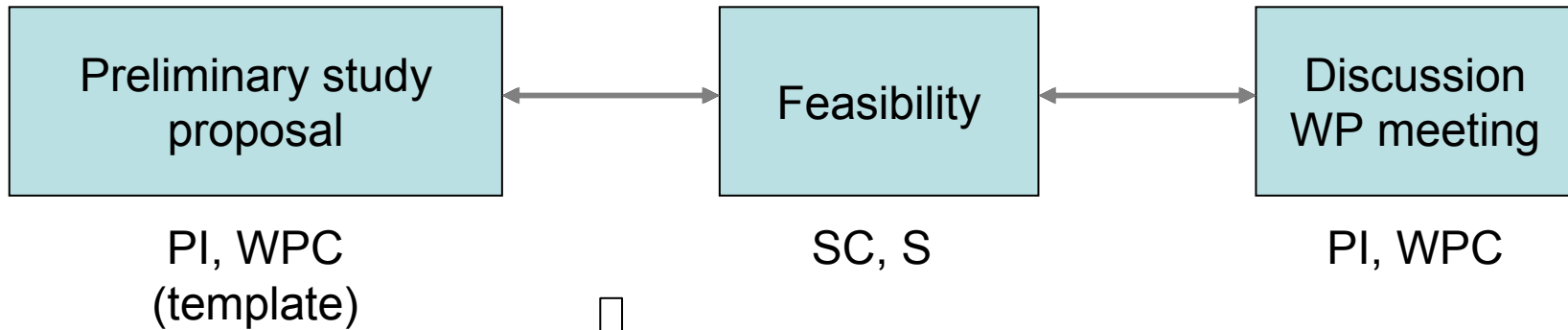
4 - publication

2 - data preparation

3 - statistical analysis



Planning





Data preparation

Data collection needed

- Med-B/C data request
- CRF creation

PI, SC (S)

Data collection / retrieval

SC (PI, S)

Data available

Extraction of
data from db

SC

Dataset
preparation

SC (S)

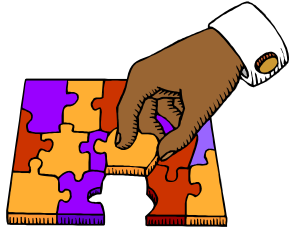
First data
overview

SC (S)

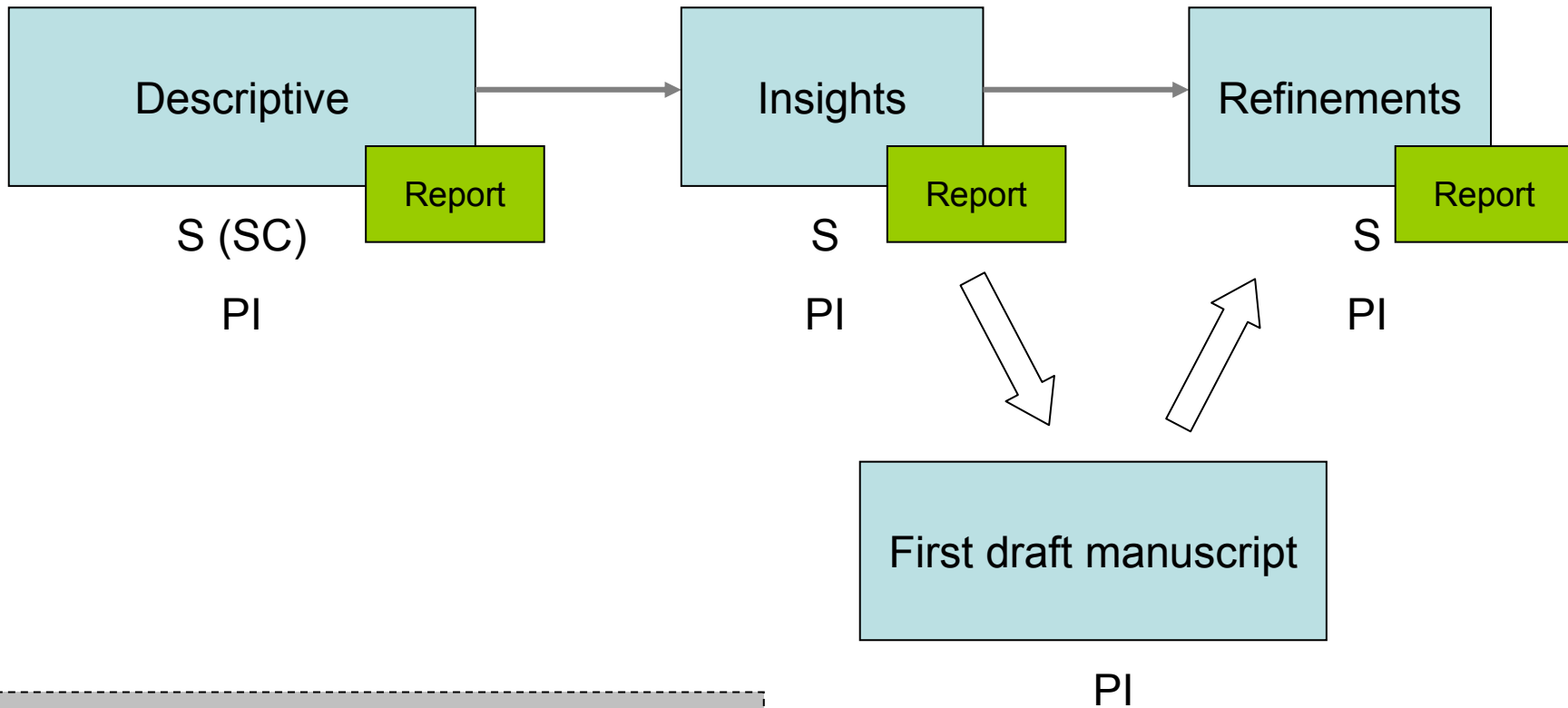


Checking
data
overview

SC, S, PI



Statistical analysis

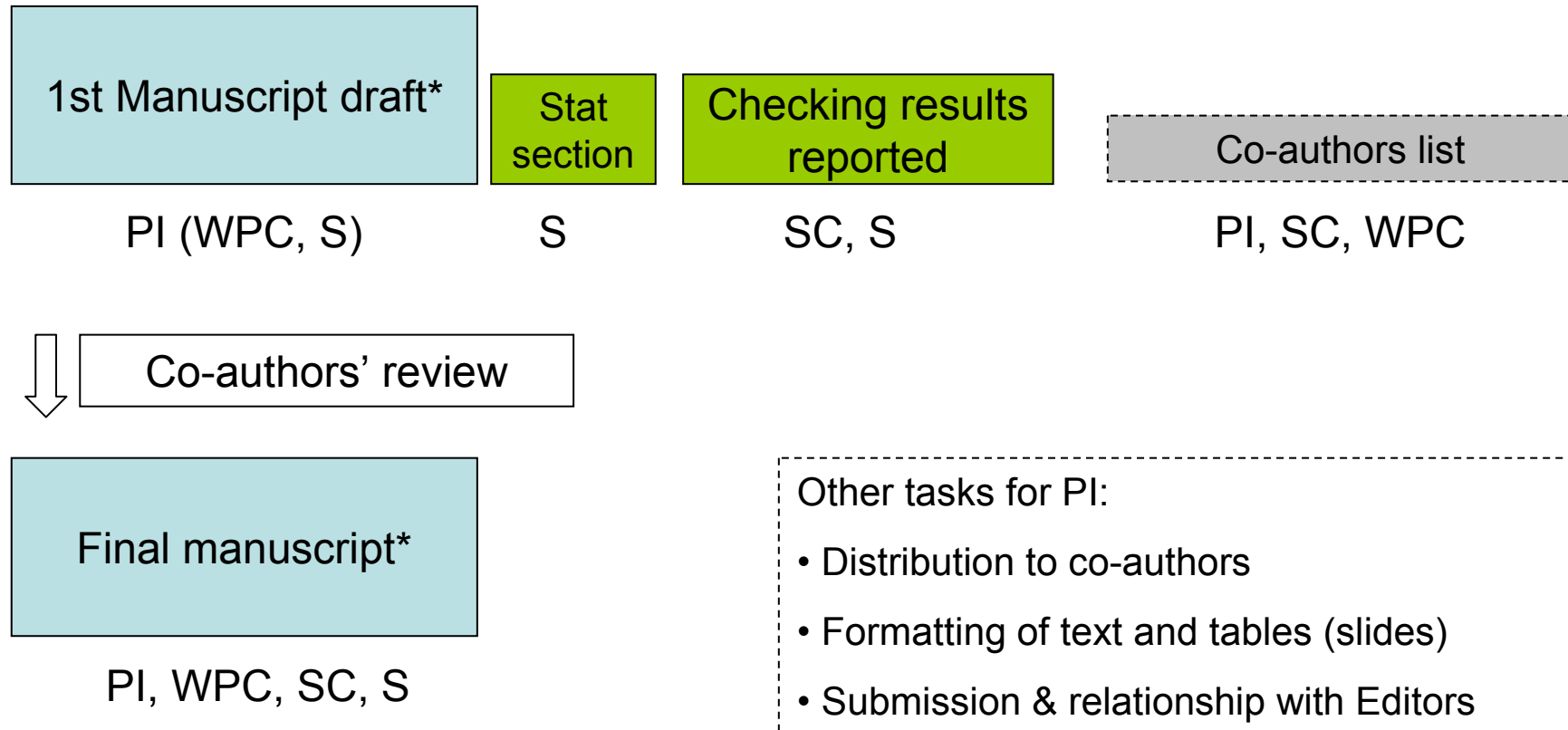


Follow-up / motivation / support: WPC



Publication

* paper, abstract, presentation





External statistical support

External Statistician (ES) / WP Statistician (WPS)

- **Objective:** keeping some homogeneity of methodological approaches and quality
- **Planning:** ES agrees on the SAP (template) with WPS
 - Methodology → EBMT Statistical Guidelines (2013)
- **Data analysis:** ES responsible; WPS available for consultation (responsibility of the PI and WPC that WPS involved when necessary)
- **Publication:** WPS agrees on draft manuscript; authorship depends on actual contributions