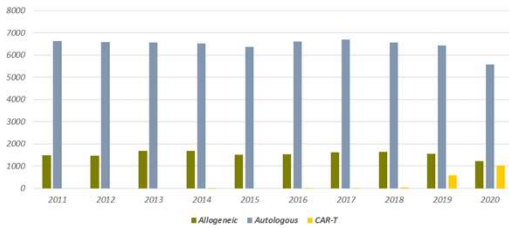


#### Members and staff

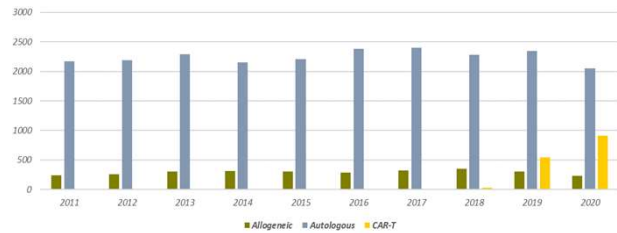
Bertram Glaß (Chair), Anna Sureda (Member), Norbert Schmitz (Member), Peter Dreger (Member), Silvia Montoto (Member), Ali Bazarbachi (Member), Sascha Dietrich (Member), Chara Kyriakou (Member), Stephen Robinson (Member), Olivier Hermine (Member), Harry Schouten (Member), Alina Tanase (Member), Stavroula Chante (Nurse), Ariane Boumendil (Biostatistician), Maud Ngoya (Biostatistician), Hervé Finel (Study Coordinator), Irma Khvedelidze (Study Coordinator)

#### Lymphoma Registry: SCT 2011-2020

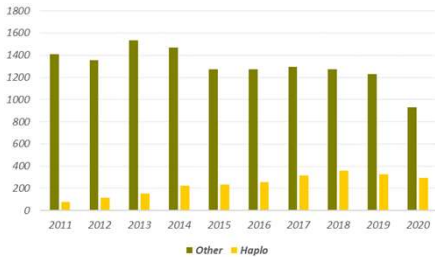
Type & number of SCT transplant  
Allo, Auto & CAR-T cells by year



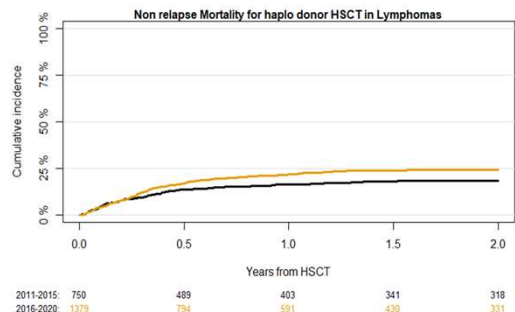
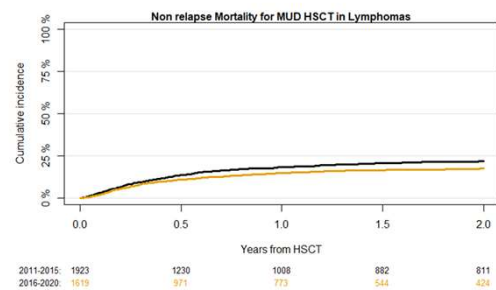
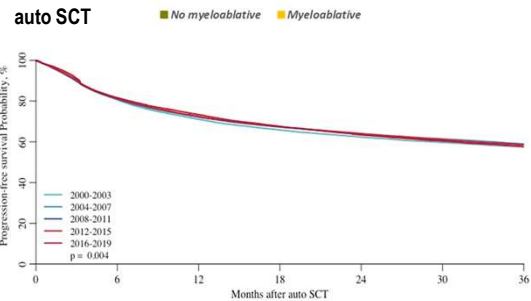
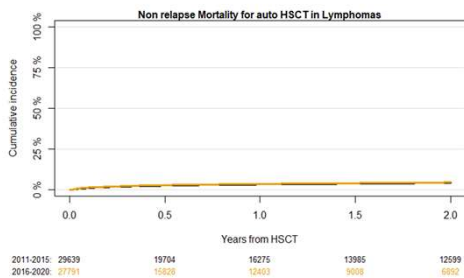
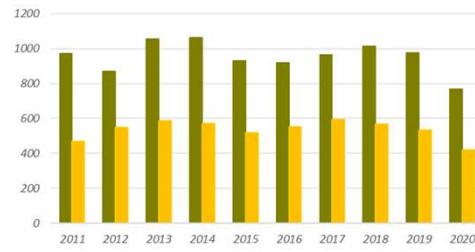
Diagnosis DLBCL  
Allo, Auto & CAR-T by year



Type of allo-HSCT  
Haplo vs other by year



Regimen intended to be myeloablative (full intensity) for Allo-HSCT by year



First allo-SCT for patients aged above 18 years old

