

# Lymphoma Working Party



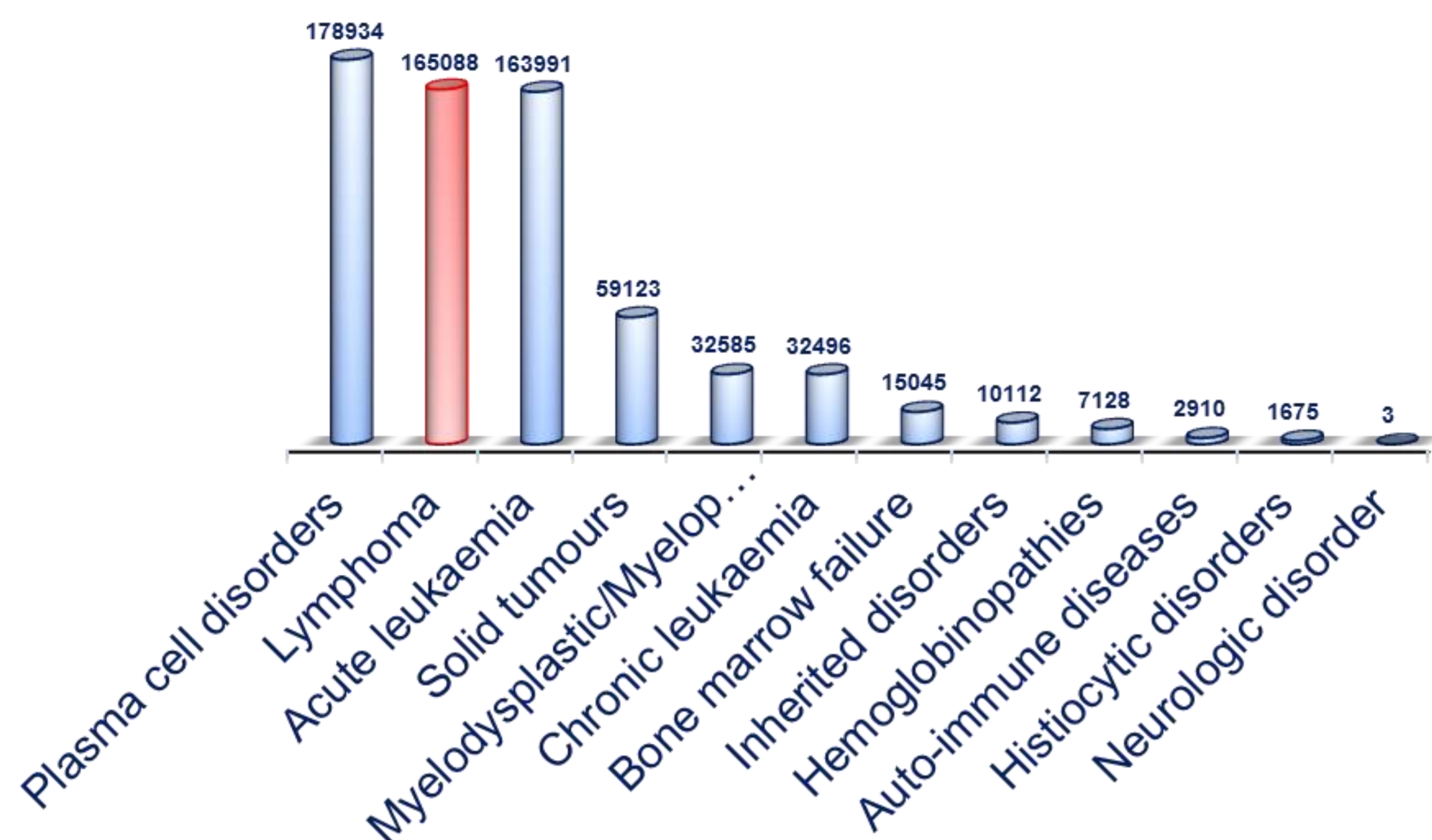
## EBMT

European Society  
for Blood and Marrow Transplantation

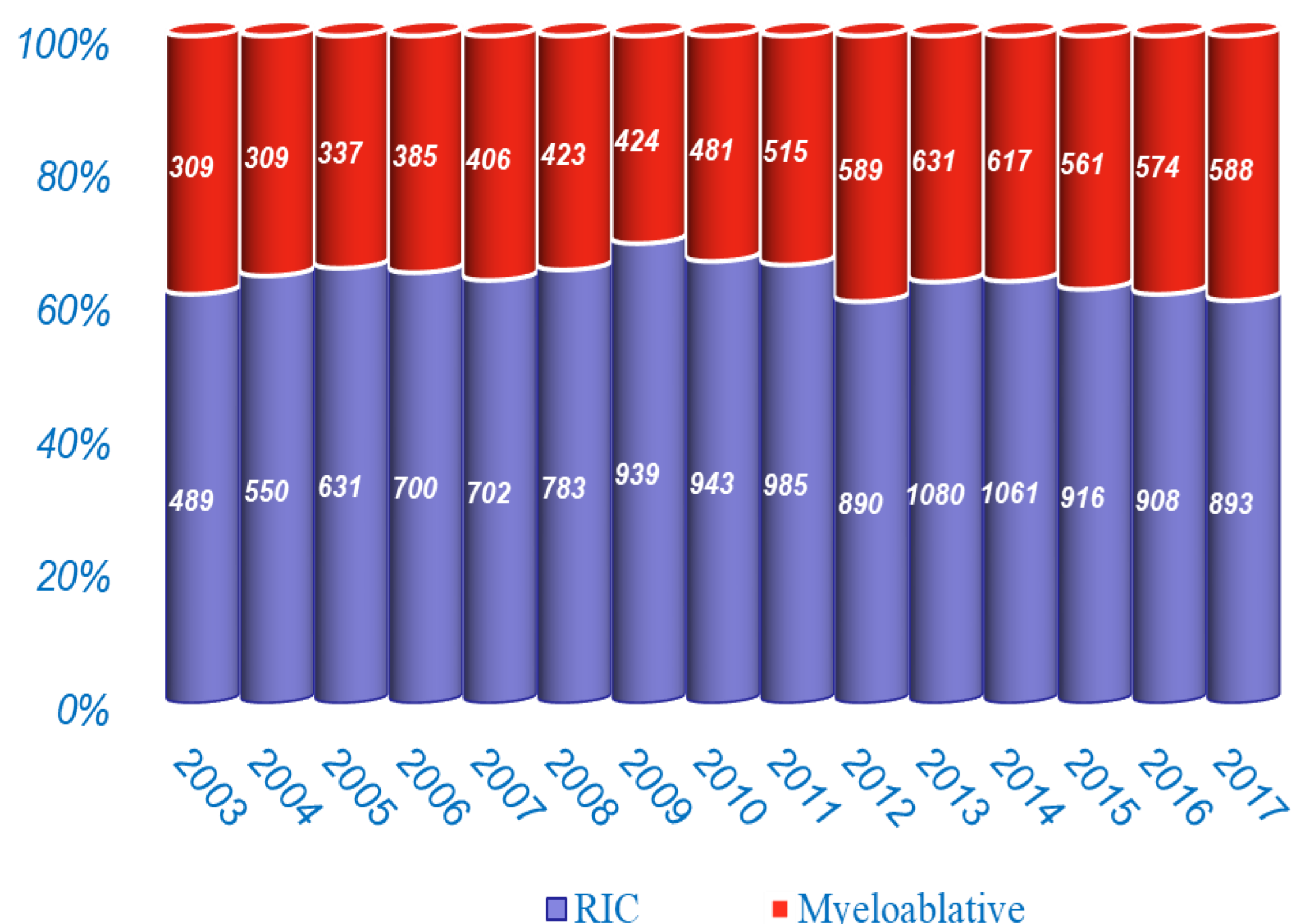
## General activity

Members and staff: Silvia MONTOTO (Chair), Stephen ROBINSON (Secretary), Sascha DIETRICH, Peter DREGER, Olivier HERMINE, Chara KYRIAKOU, Norbert SCHMITZ, Harry SCHOUTEN, Anna SUREDA, Alina TANASE, Ariane BOUMENDIL (Statistician), Hervé FINEL (Study Coordinator), Irma KHVEDELIDZE (Study Coordinator)

### The EBMT Database 2018: Transplants by disease category

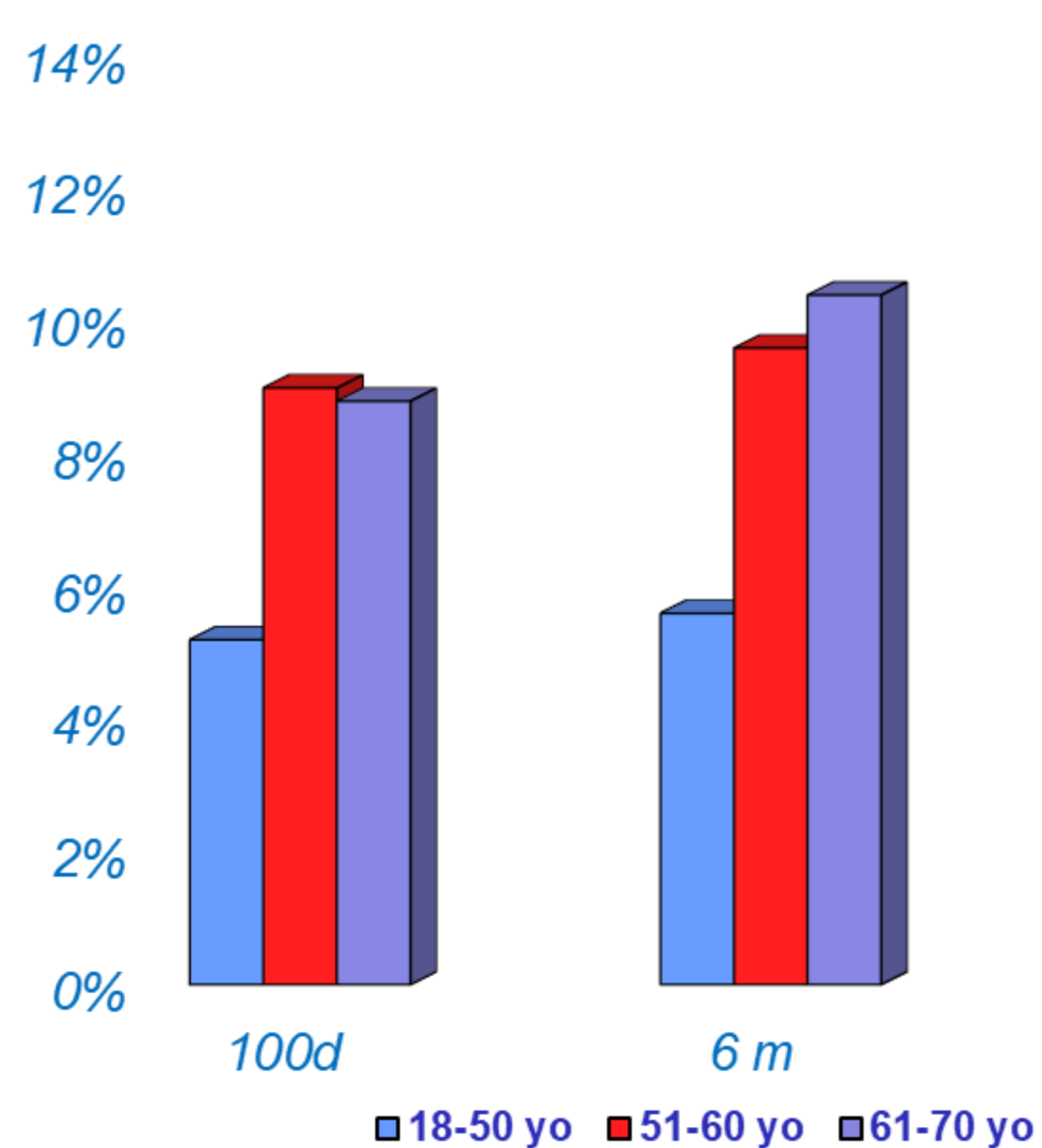


### Allo-SCT : type of conditioning



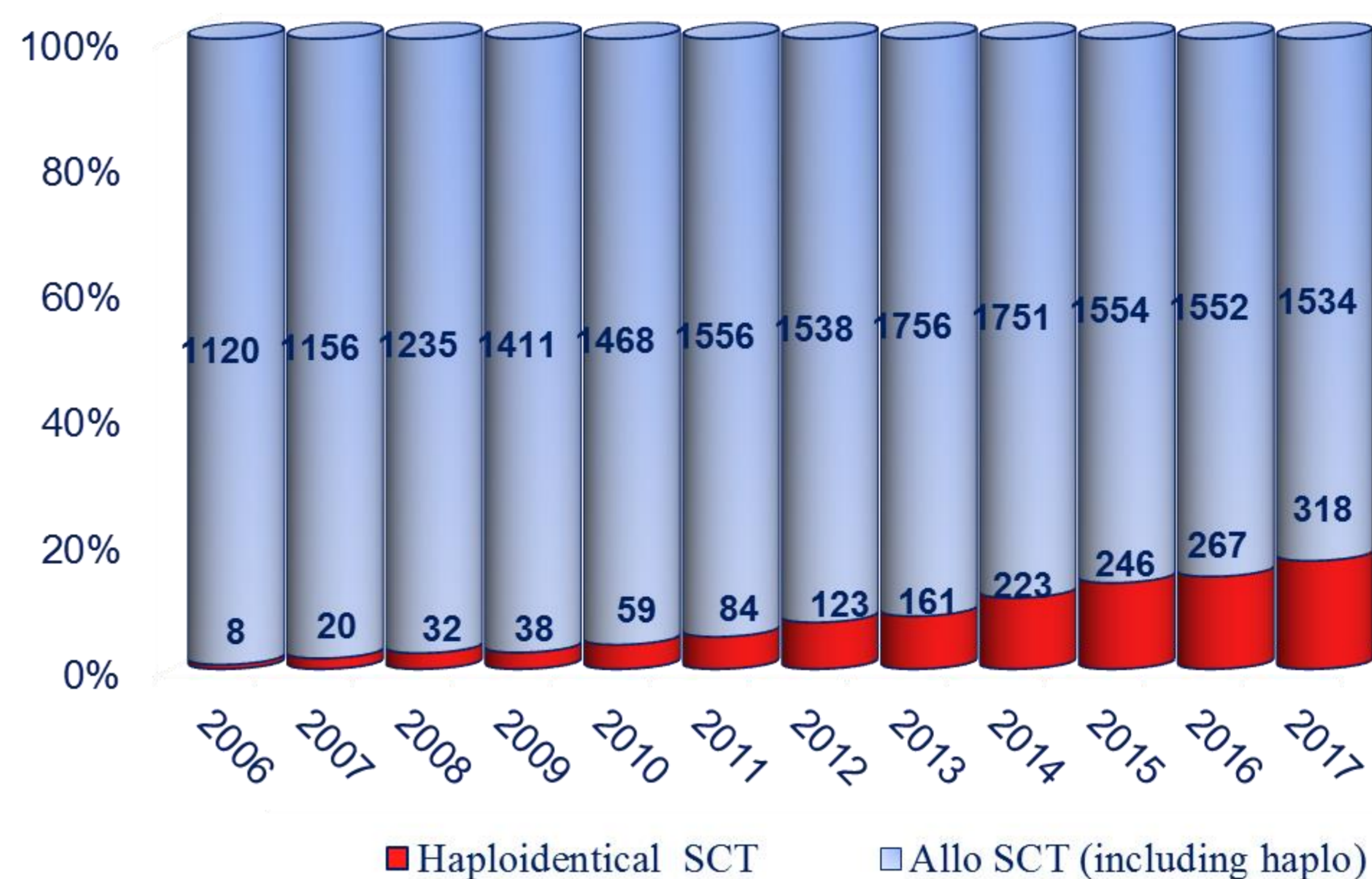
### Allo-SCT in adults aged between 18 and 70 yo transplanted between 2013 and 2017

#### NRM (%) by age group



### Lymphoma Registry: SCT 2008-2017

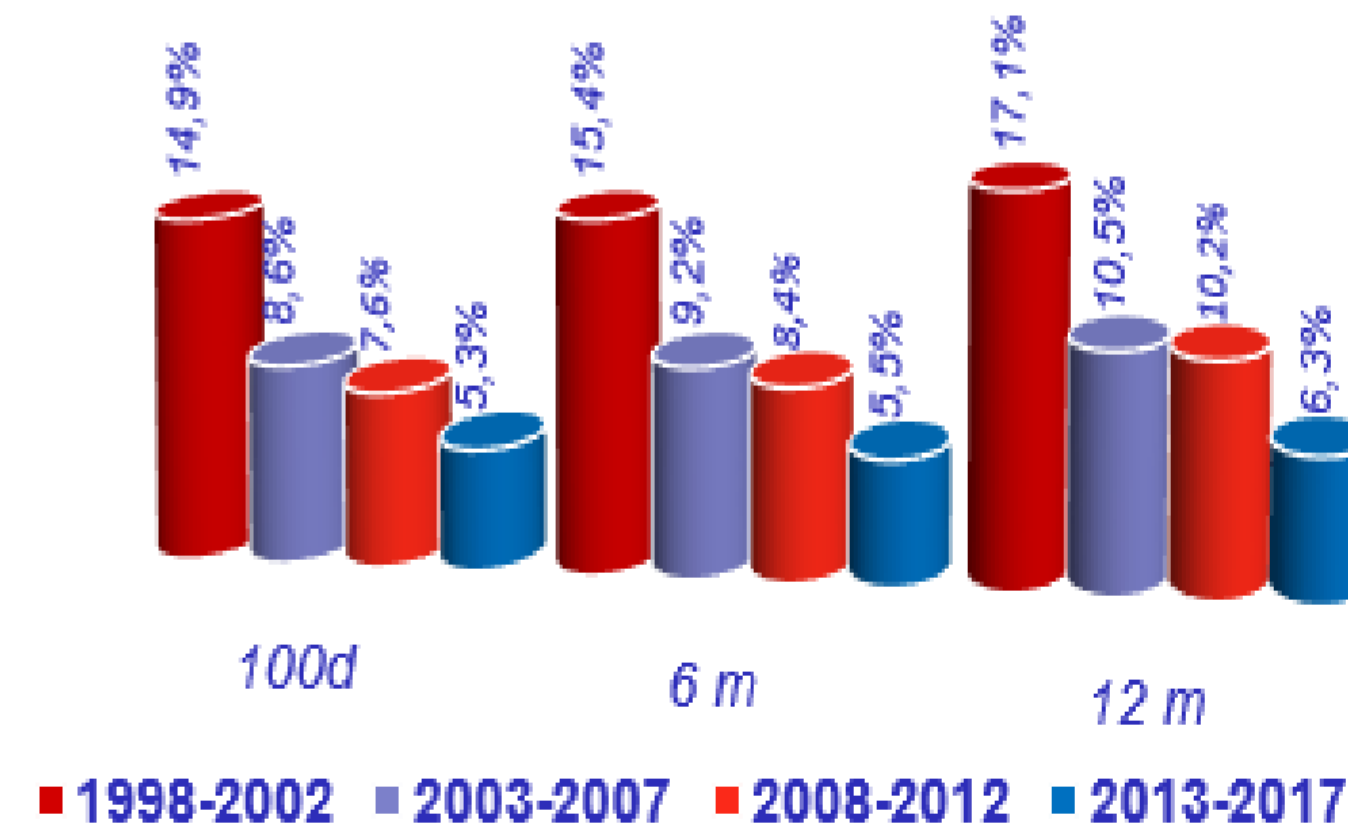
#### Allo-SCT: Proportion of Haploidentical SCT



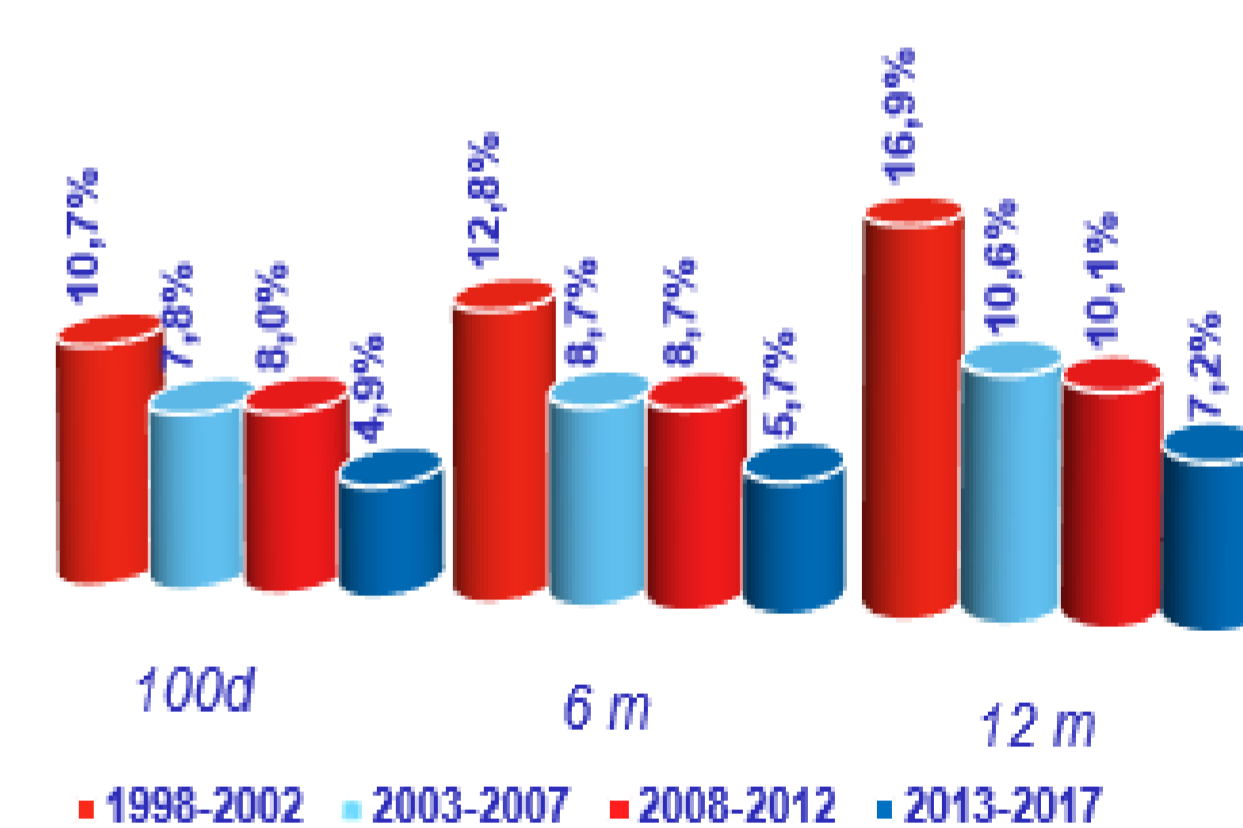
#### Allo-SCT adults 18-50 yo

#### NRM (%) by period according to donor type

##### HLA id sibling



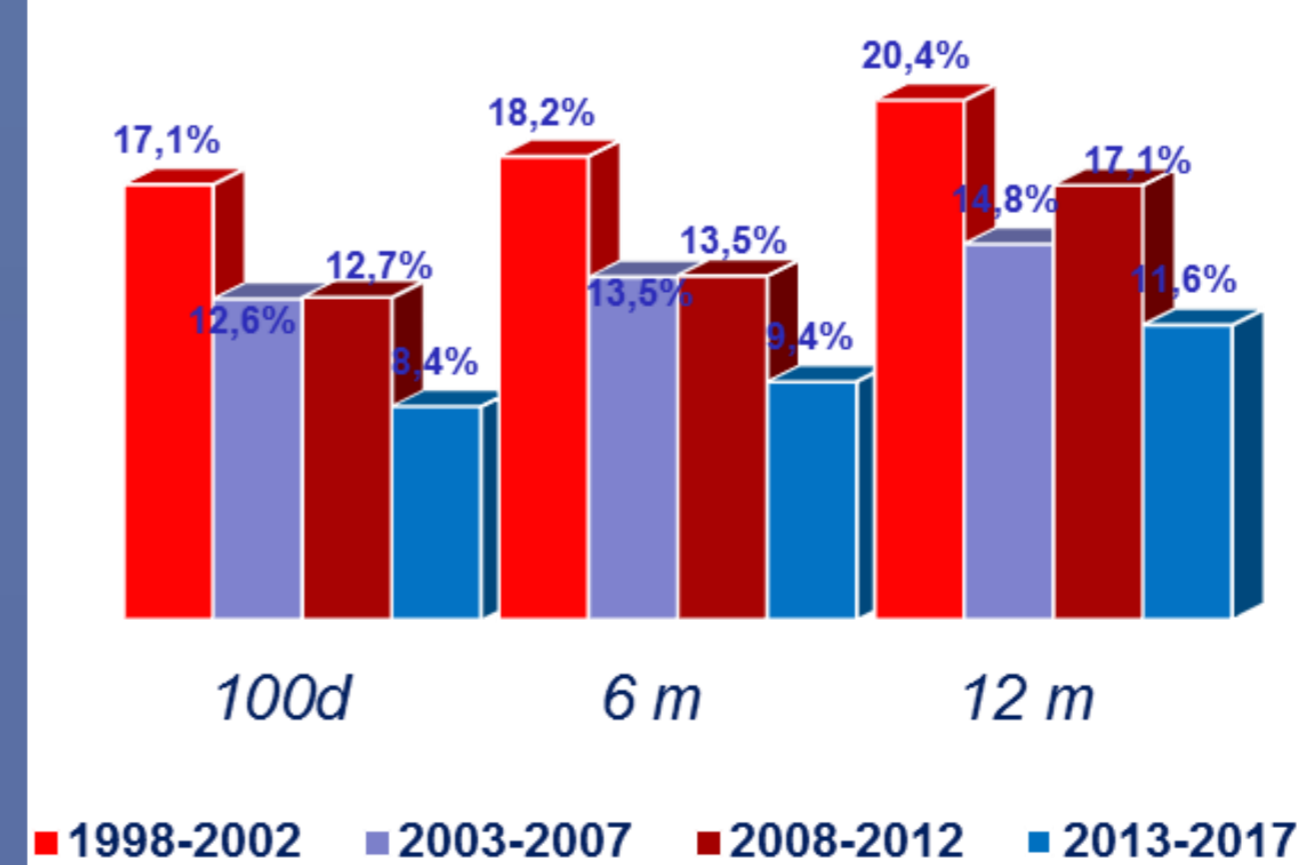
##### MUD



#### Allo-SCT in adults aged between 51 and 70 yo:

#### NRM (%) by period according NRM (%) by period according to intensity of the conditioning regimen

##### RIC



##### MAC

