

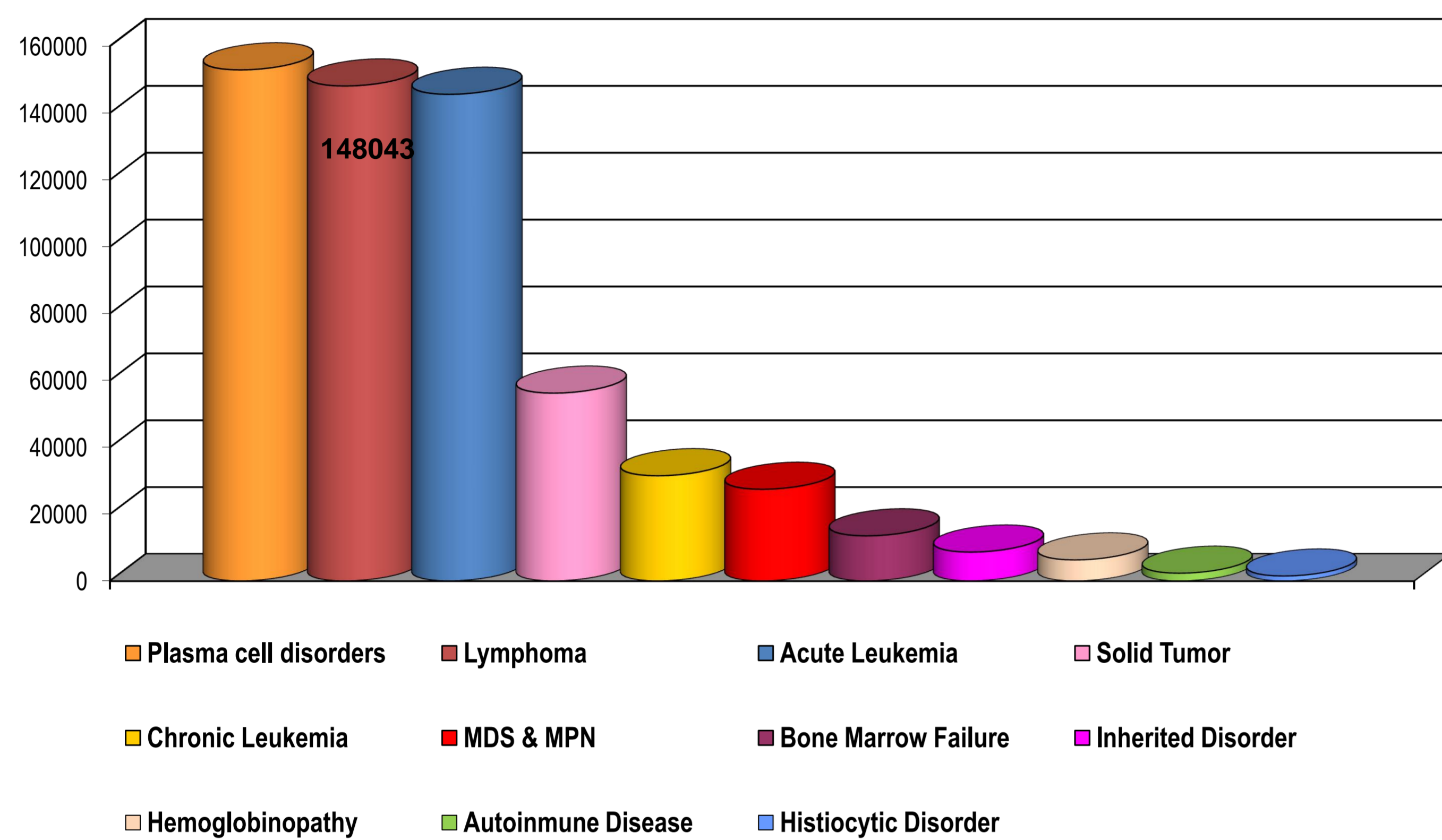


# Lymphoma Working Party

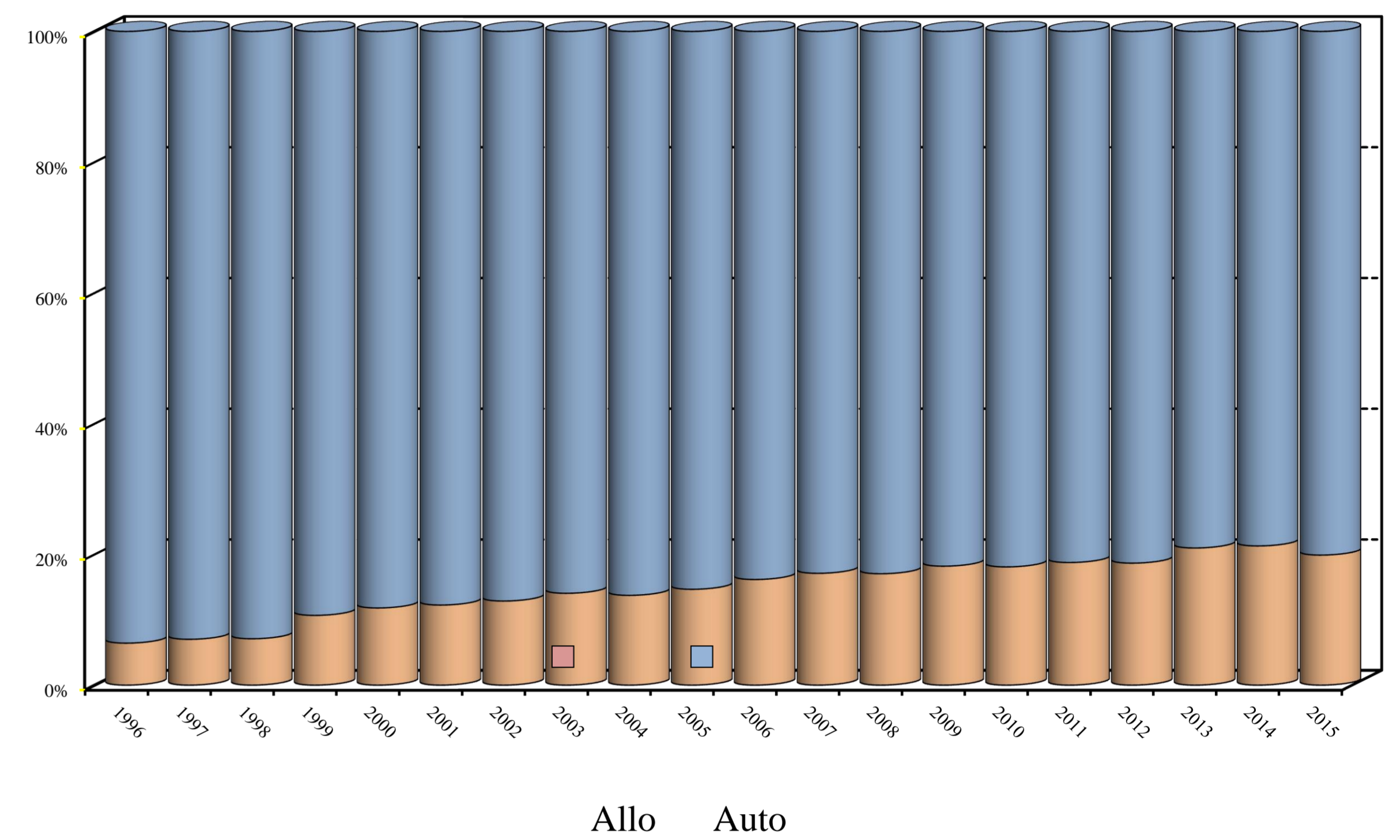
## General activity

Members and staff: Silvia Montoto (Chair), Stephen Robinson (Secretary), Sascha Dietrich, Peter Dreger, Olivier Hermine, Chara Kyriakou, Norbert Schmitz, Harry Schouten, Anna Sureda, Alina Tanase, Ariane Boumendil (Statistician), Hervé Finel (Study Coordinator), Irma Khvedelidze (Data Manager)

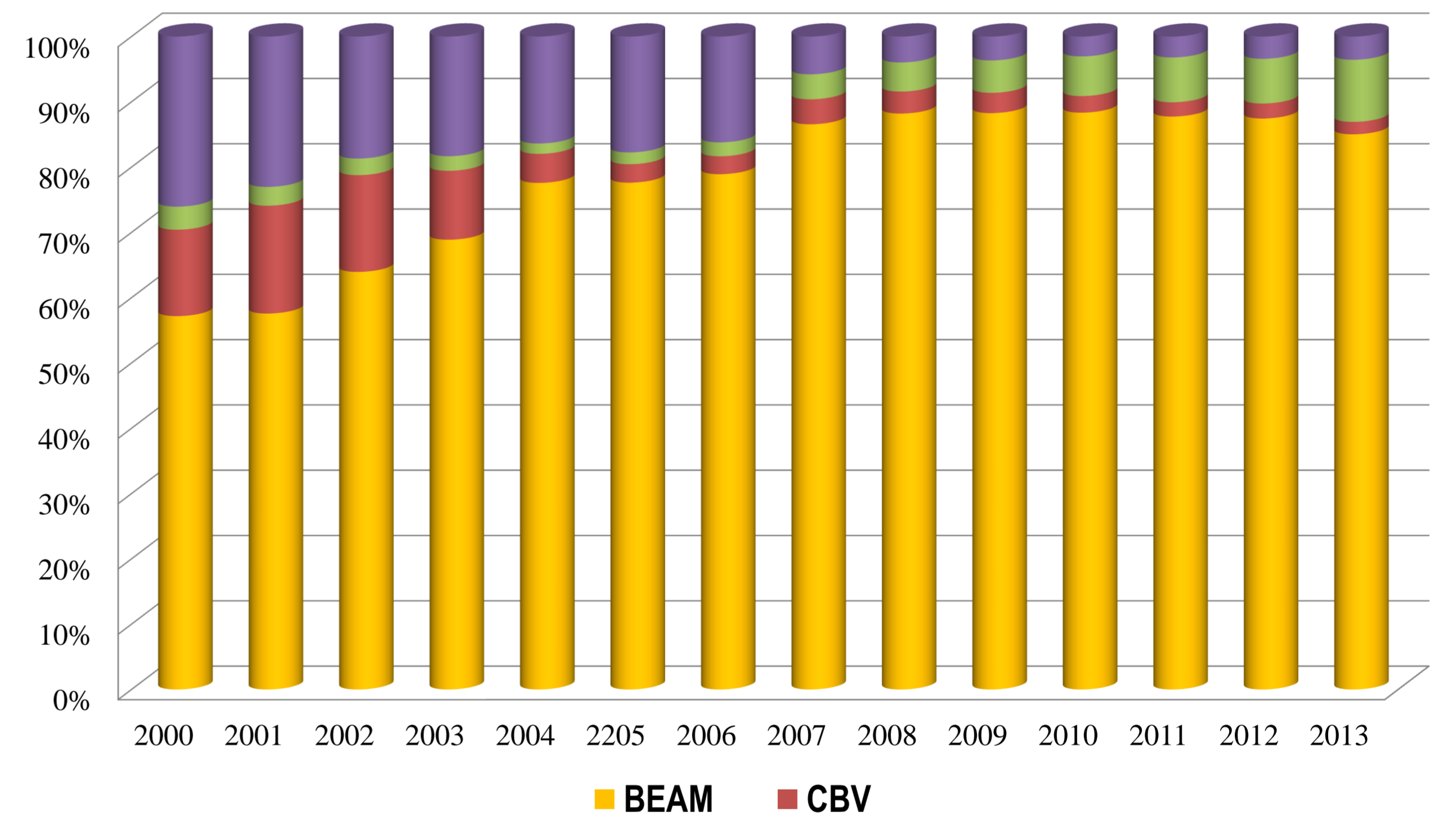
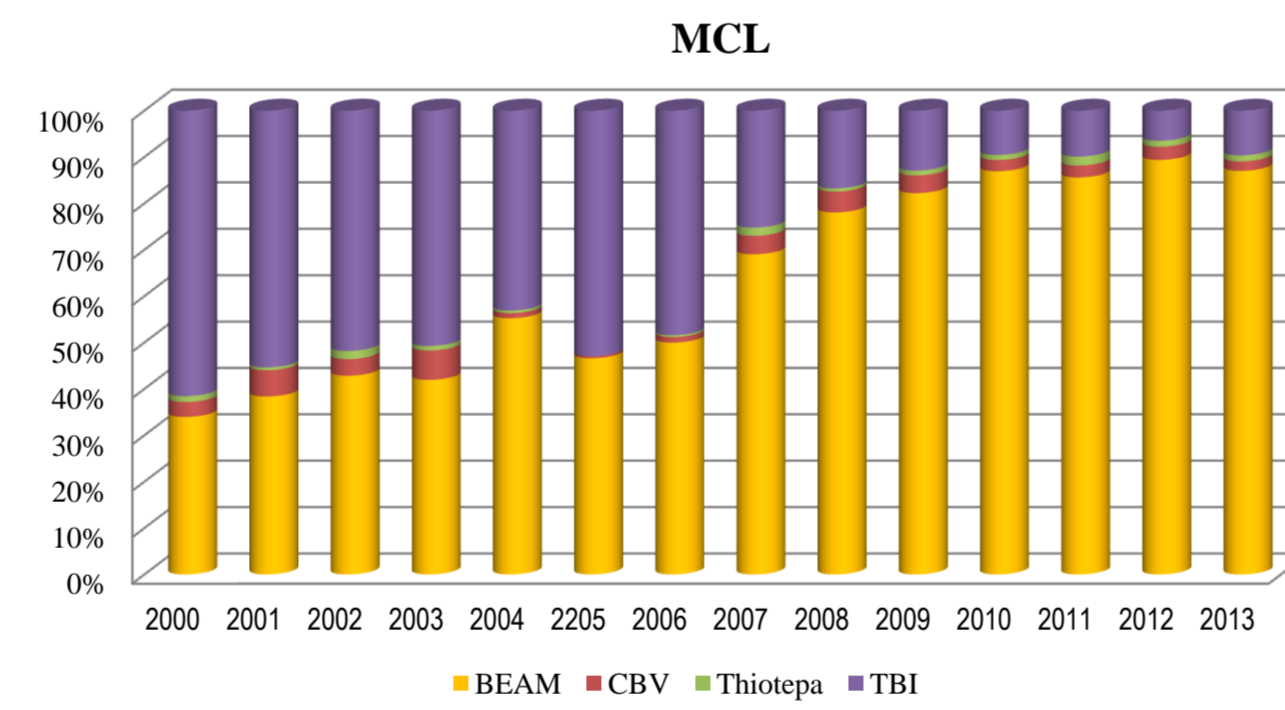
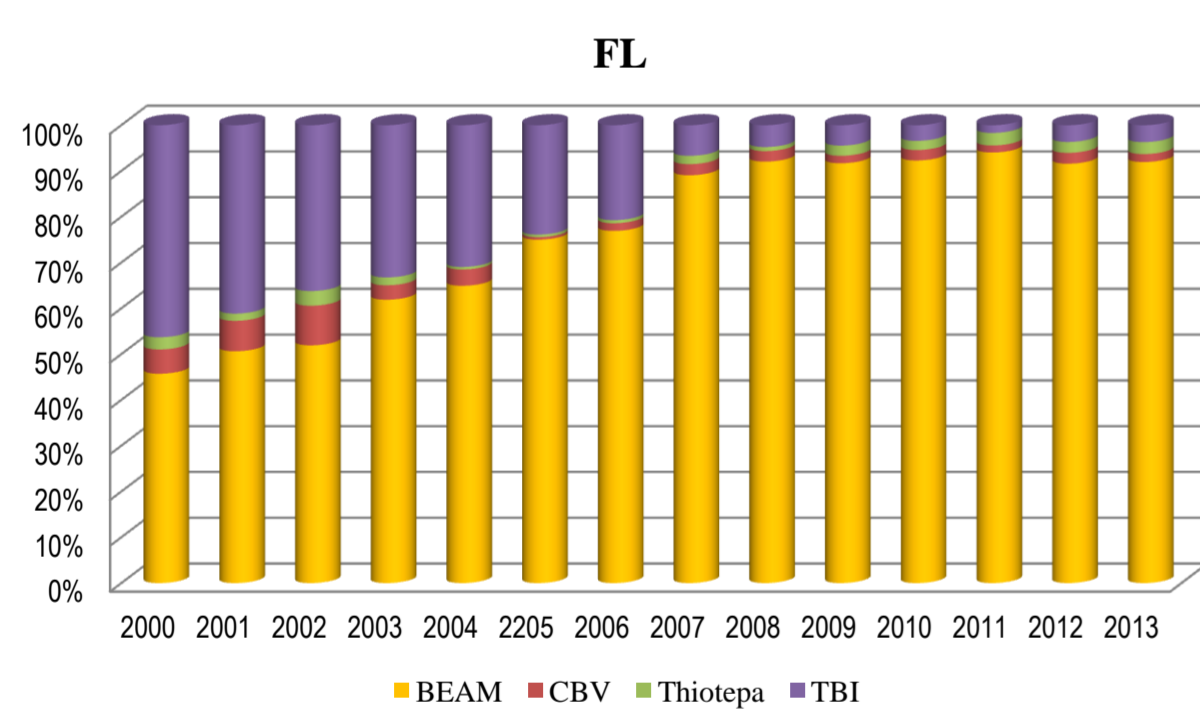
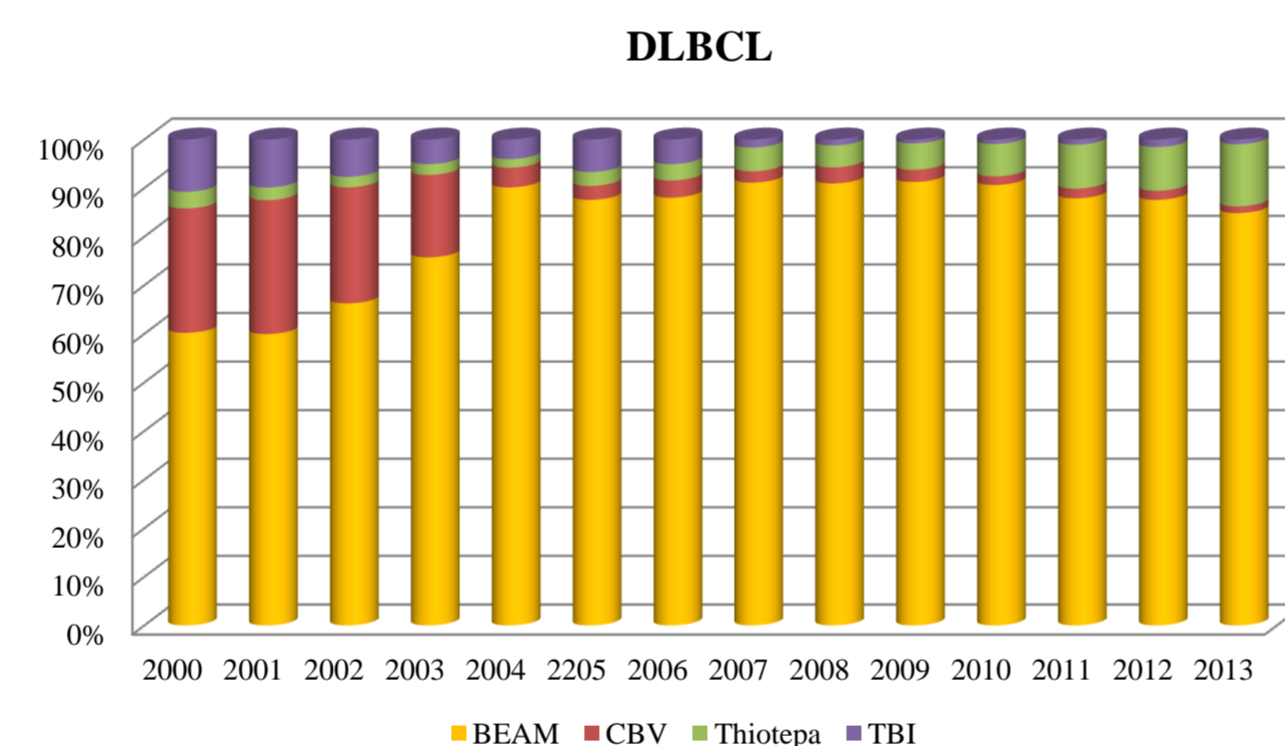
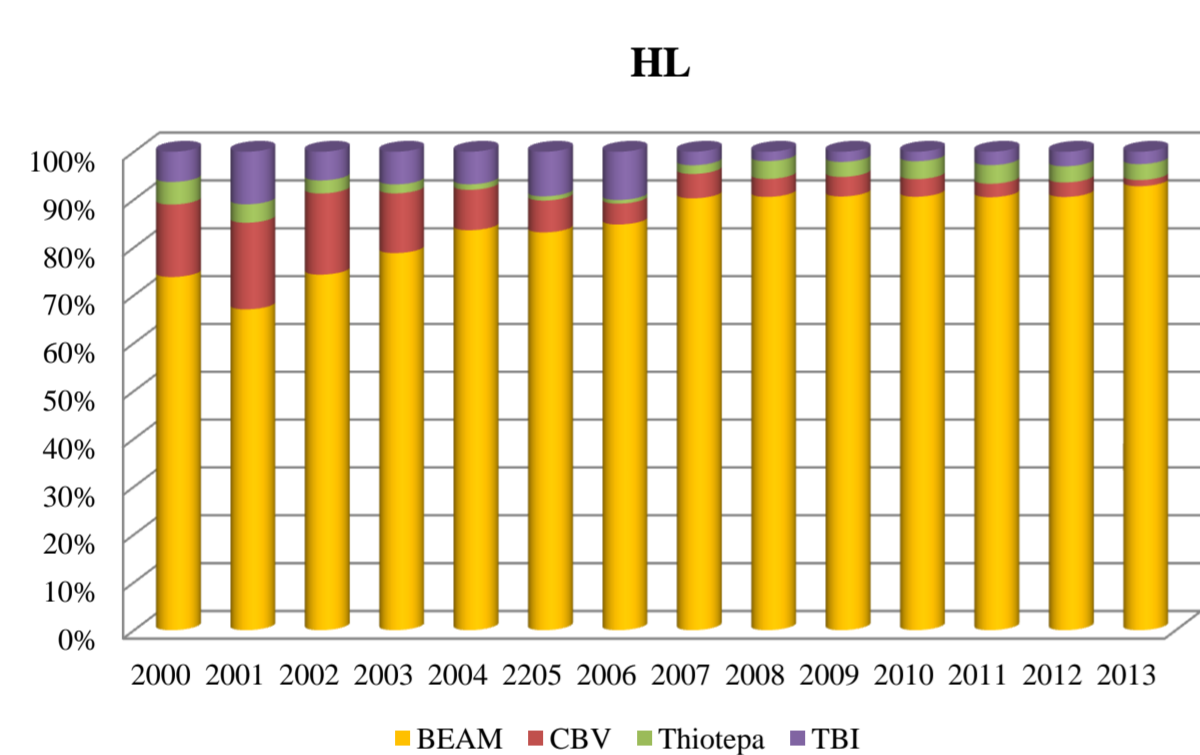
**EBMT database 2017: transplants by disease category**



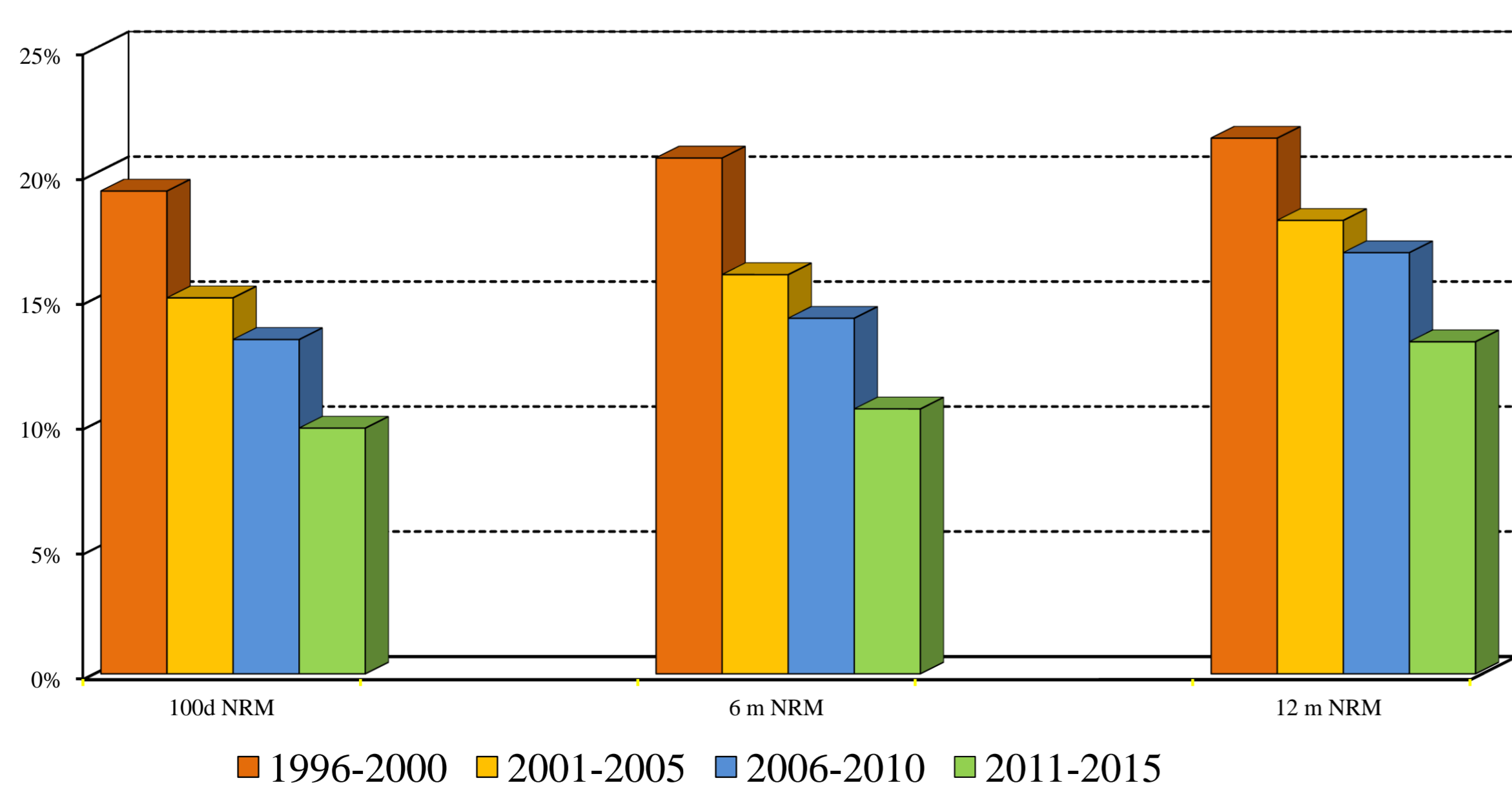
**% of Allo-SCT and Auto-SCT by year**



**Conditioning regimens for lymphomas in the ASCT setting**



**Allo-SCT adults 51-70 yo – NRM (%) by period**



**Allo-SCT adults 18-50 yo - NRM (%) by period according to donor type**

