



Chronic Malignancies Working Party MPN & Myelodysplastic Syndrome

Activities of WP and Subcommittees

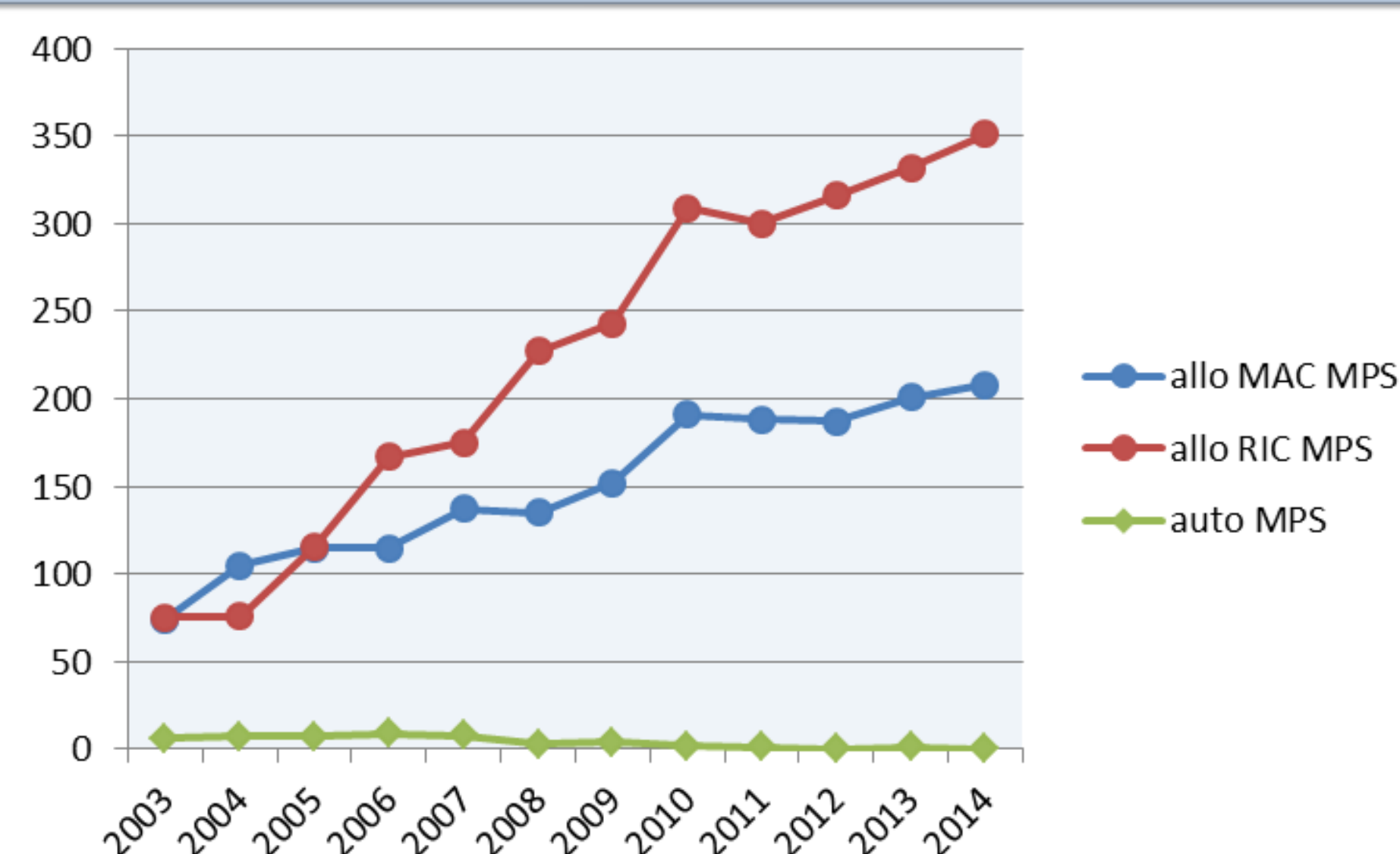
Chair: Nicolaus Kröger

Secretary: Stefan Schönland

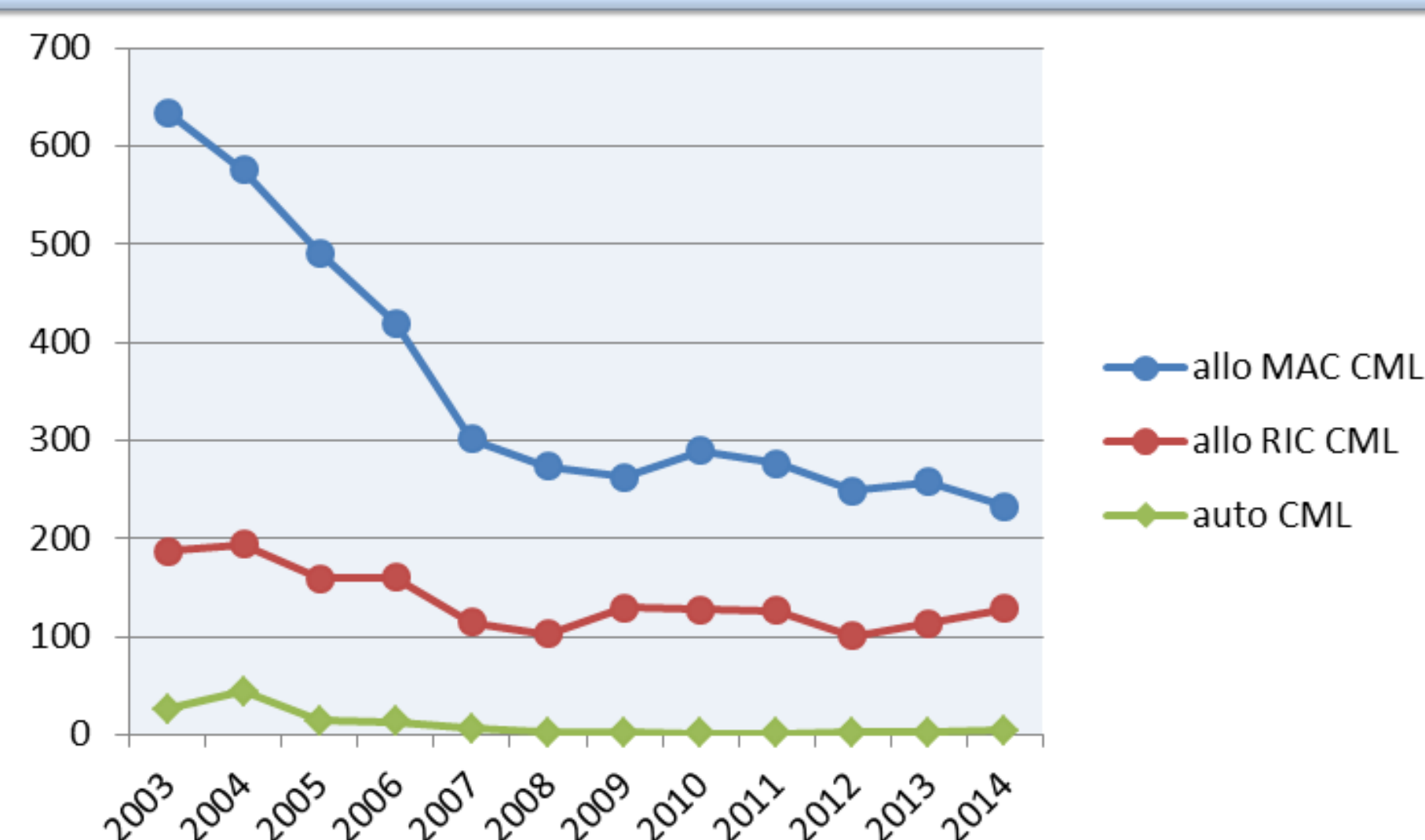
Subcommittee Myeloproliferative Neoplasms

Chair: Yves Chalandon, Vice-chair: Eduardo Olavarria

Number of MPS transplants 2003-2014



Number of CML transplants 2003-2014



Ruxolitinib Non-Interventional Prospective Study

Effect of prior therapy with JAK inhibitor ruxolitinib in patients with primary or post ET/PV myelofibrosis on outcome after allogeneic stem cell transplantation

In this prospective, non-interventional study the impact of ruxolitinib treatment prior to allo-HSCT on outcome such as engraftment, graft-versus-host disease, non-relapse mortality, relapse and overall survival will be addressed. Secondary outcomes are treatment-related toxic effects, relapse rate, event-free survival and overall survival. Patients' outcome will be analysed also by response status to ruxolitinib prior to HSCT. The paper is expected in 2020/2021.

Number of patients needed 100 in 2 years (the participation form is available at the EBMT booth)

Inclusion criteria all patients with primary or post ET/PV myelofibrosis who undergo allogeneic stem cell transplantation and have been previously treated with ruxolitinib, regardless of their response to this drug.

Exclusion criteria blastic phase of myelofibrosis

Principal investigator Nicolaus Kröger, University Medical Center Hamburg-Eppendorf, Germany

Sponsor Novartis

We invite you to join the activities of the CMWP



Chair & Data Office Leiden & Statistician

Chair Nicolaus Kröger, Department of Stem Cell Transplantation, University Medical Center Hamburg-Eppendorf, Hamburg, Germany n.kroeger@uke.de

Contact Anja van Biezen, EBMT Data Office Leiden, The Netherlands.

Linda Koster & Henric-Jan Blok, Junior Data Managers

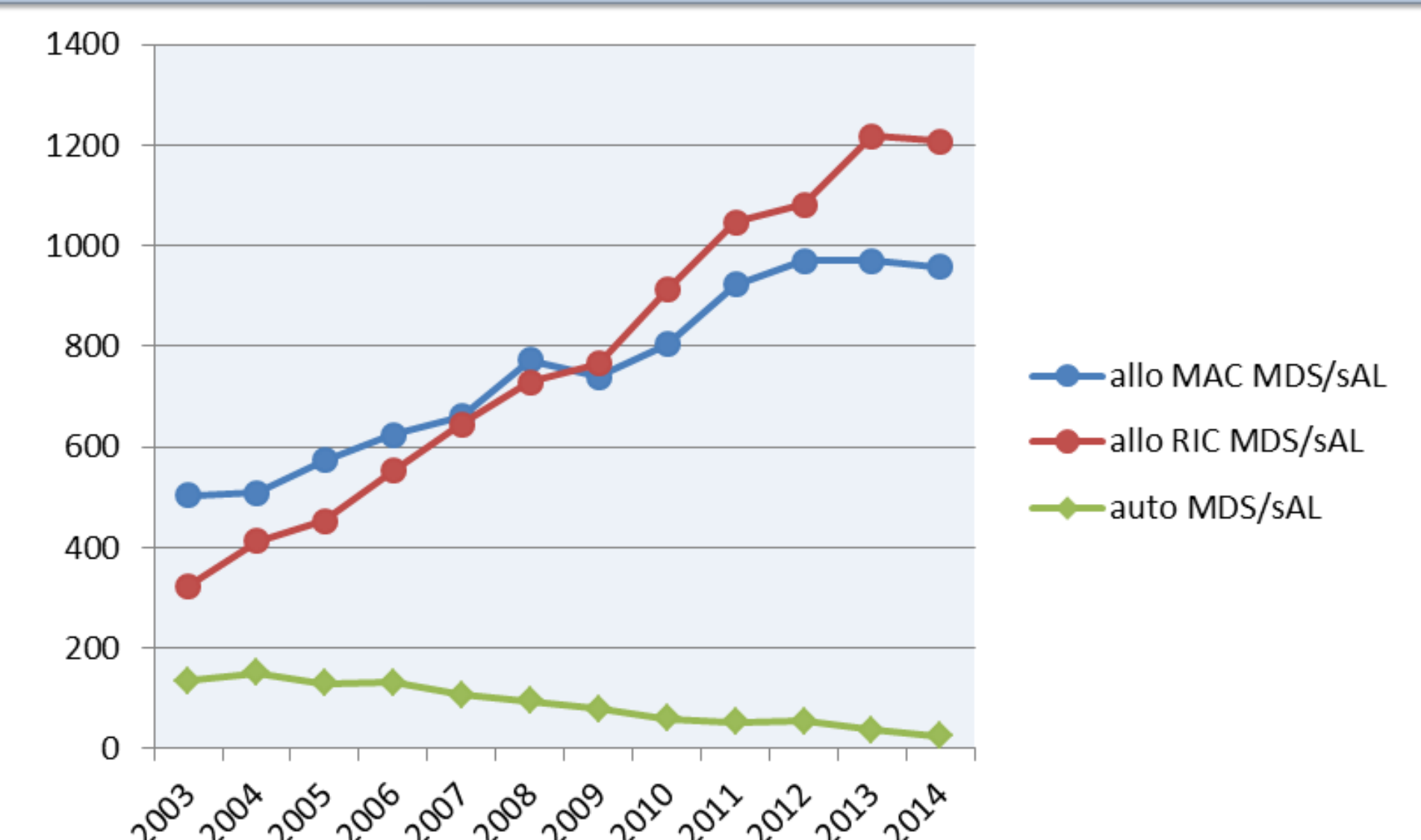
Telephone: +31 71 526 4615 cmwpebmt@lumc.nl

Statistician Simona Iacobelli, Rome, Italy simona.iacobelli@ebmt.org

Subcommittee Myelodysplastic Syndrome

Chair: Marie Robin, Vice-chair: Theo de Witte

Number of MDS / sAL transplants 2003-2014



You can help with our Data Quality Initiatives

To improve the data quality of the EBMT registry, the Chronic Malignancies Working Party would like to invite you to participate in our Data Quality Initiatives in MDS, CMML and/or MPN (including liver toxicity study).

Please scan the QR-codes and you will be redirected to the participation survey(s).

MDS



CMML

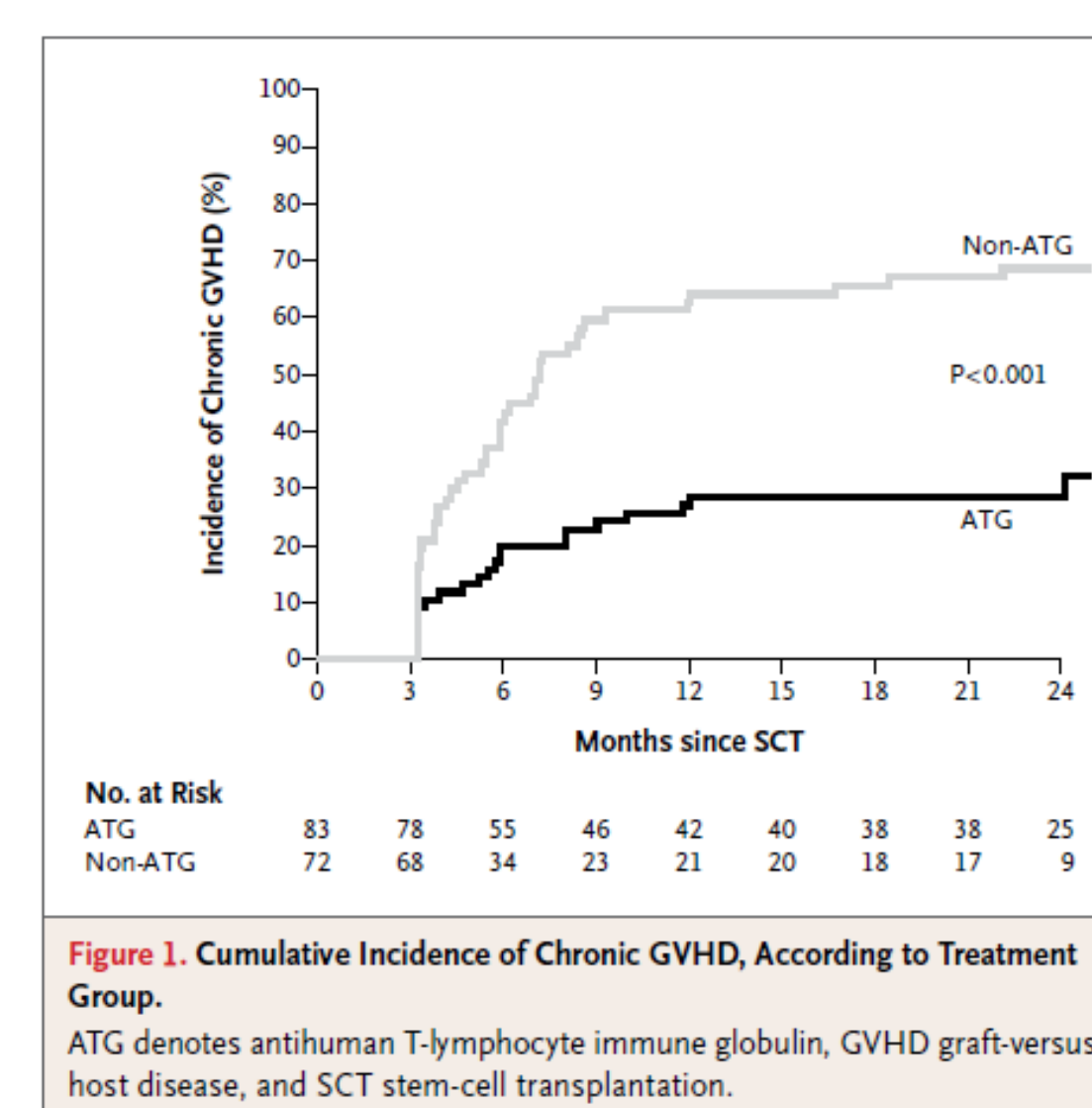


MPN



CMWP Publications

Antilymphocyte Globulin for Prevention of Chronic Graft-versus-Host Disease. Kröger, N., Solano, C. et al. *N Engl J Med.* 2016 Jan 7. pii: *N Engl J Med* 2016. 374;1



Second allogeneic transplantati-on for relapse of malignant disea-se: retrospective analysis of outcome and predictive factors by the EBMT. Ruutu T. *Bone Marrow Transplant.* 2015 Dec;50(12):1542-50.

Indication and management of allo-geneic stem cell transplantation in primary myelofibrosis: a consensus process by an EBMT/ELN international working group. Kröger NM. *Leukemia.* 2015 Nov;29(11):2126-33.

Autologous haematopoietic cell transplantation in elderly patients with multiple myeloma. Auner HW. *Br J Haematol.* 2015 Nov;171(4):453-62.

Outcomes of Cord Blood Transplan-tation Using Reduced-Intensity Con-ditioning for Chronic Lymphocytic Leukemia: A Study on Behalf of Eurocord and Cord Blood Committee of Cellular Therapy and Immunobio-logy Working Party, Chronic Malignancies Working Party of the Euro-pean Society for Blood and Marrow Transplantation, and the Société Française de Greffe de Moelle et Therapie Cellulaire. Xavier E. *Biol Blood Marrow Transplant.* 2015 Aug;21(8): 1515-23

Achievement of complete remission predicts outcome of allogeneic ha-ematopoietic stem cell transplan-tation in patients with chronic myelo-monocytic leukaemia. A study of the Chronic Malignancies Working Party of the European Group for Blood and Marrow Transplantation. Symeonidis A. *Br J Haematol.* 2015 Jul 26.

Efficacy and outcome of allogeneic transplantation in IgD and nonsecre-tory myeloma. A report on behalf of the Myeloma Subcommittee of the Chronic Malignancies Working Par-ty of the European Group for Blood and Marrow Transplantation. Morris C. *Biol Blood Marrow Transplant.* 2015 Jun;21(6): 1054-8.

Comparison of upfront tandem au-tologous-allogeneic transplantation versus reduced intensity allogeneic transplantation for multiple myelo-ma. Sahebi F. *Bone Marrow Transplant.* 2015 Jun;50(6):802-7.

Donor Lymphocyte Infusions for Chronic Myeloid Leukemia Relapsing after Allogeneic Stem Cell Transplan-tation: May We Predict Graft-ver-sus-Leukemia Without Graft-versus-Host Disease? Radujkovic A. *Blood.* 2015 May 21;125(21):3347-50.

Impact of CR before and after al-logeneic and autologous trans-plan-tation in multiple myeloma: results from the EBMT NMAM2000 prospective trial. Iacobelli S. *Bone Marrow Transplant.* 2015 Apr;50(4):505-10.

Impact of the revised International Prognostic Scoring System, cyto-genetics and monosomal karyotype on outcome after allogeneic stem cell transplantation for myelody-s-plastic syndromes and secondary acute myeloid leukemia evolving from myelodysplastic syndromes: a retrospective multicenter study of the European Society of Blood and Marrow Transplantation. Koenecke C. *Haematologica.* 2015 Mar;100(3):400-8.

Comparison of unrelated cord blood and peripheral blood stem cell transplantation in adults with myelodysplastic syndrome after reduced-intensity conditioning re-gimen: a collaborative study from Eurocord (Cord blood Committee of Cellular Therapy & Immunobiology Working Party of EBMT) and Chro-nic Malignancies Working Party. Robin M. *Biol Blood Marrow Transplant.* 2015 Mar;21(3): 489-95.

Trends in autologous hema-to-poietic cell transplantation for mul-tiple myeloma in Europe: increased use and improved outcomes in el-derly patients in recent years. Auner HW. *Bone Marrow Transplant.* 2015 Feb;50(2):209-15.