



European Society for Blood and Marrow Transplantation

Chronic Malignancies Working Party MPN & Myelodysplastic Syndrome

Activities of WP and Subcommittees

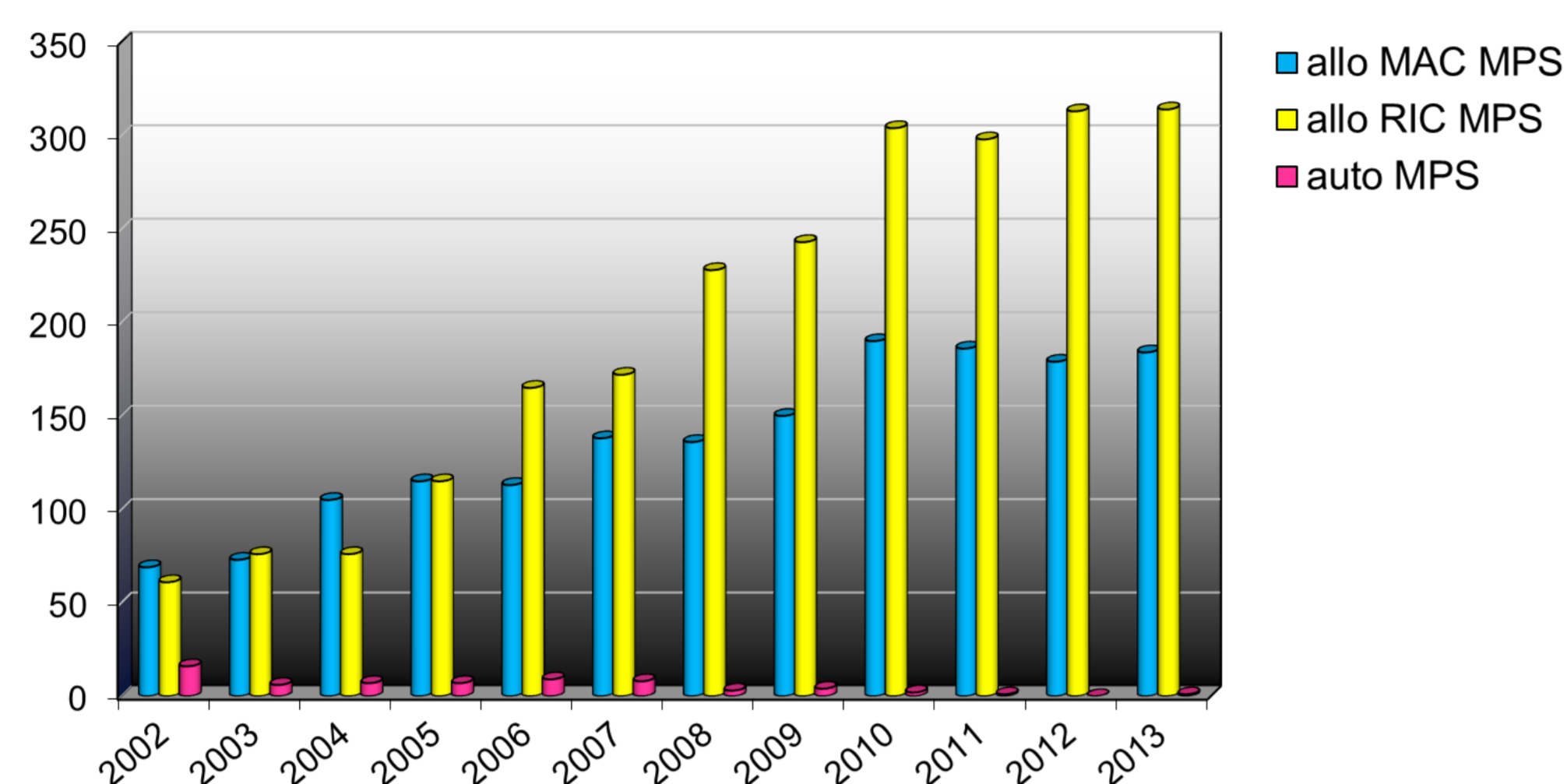
Chair: Nicolaus Kröger

Secretary: Stefan Schönland

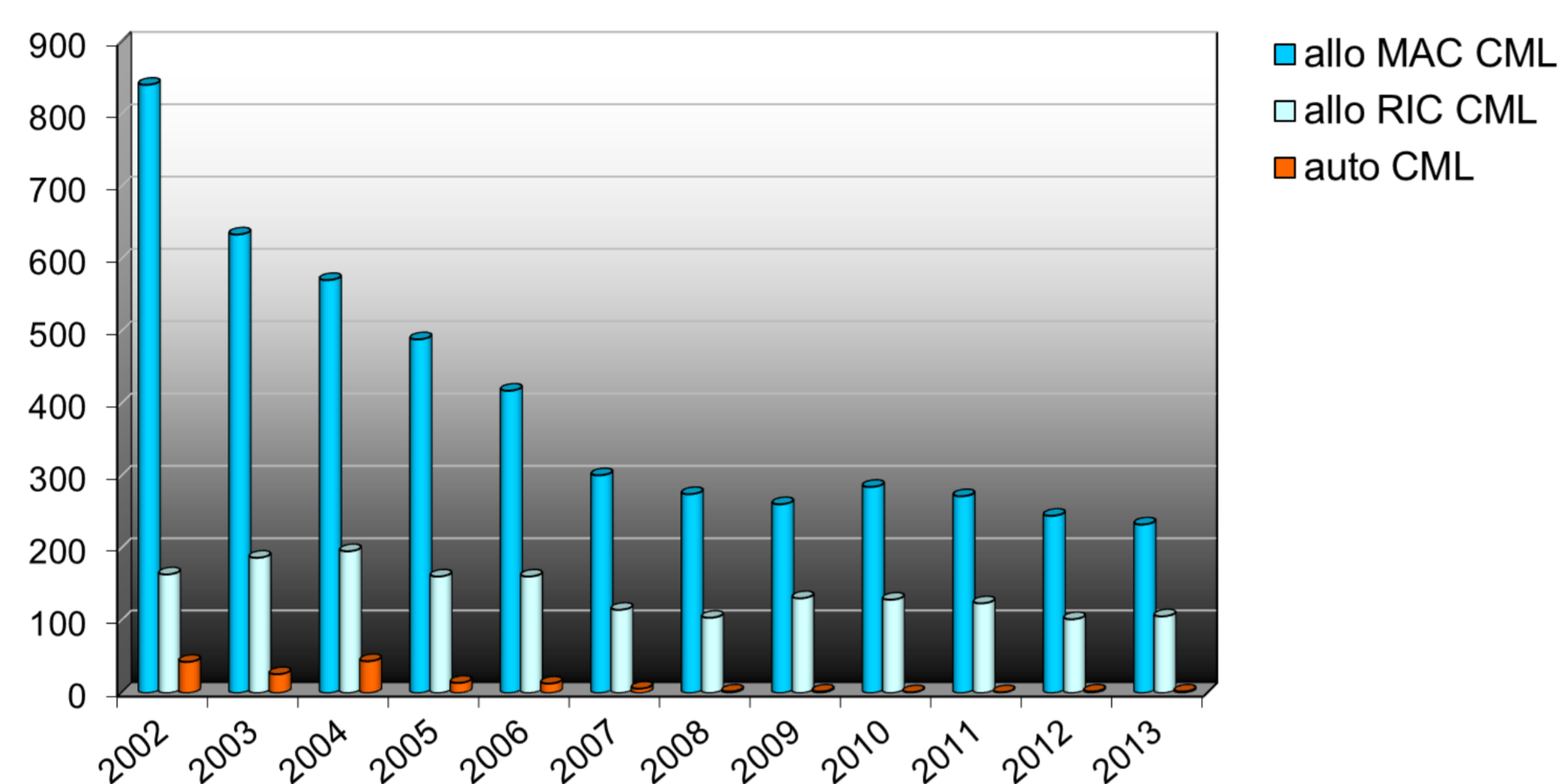
Subcommittee Myeloproliferative Neoplasms

Chair: Eduardo Olavarria, Vice-Chair: Yves Chalandon

Number of MPS transplants 2002-2013



Number of CML transplants 2002-2013



Ruxolitinib Non-Interventional Prospective Study

Effect of prior therapy with JAK inhibitor ruxolitinib in patients with primary or post ET/PV myelofibrosis on outcome after allogeneic stem cell transplantation

In this prospective, non-interventional study the impact of ruxolitinib treatment prior to allo-HSCT on outcome such as engraftment, graft-versus-host disease, non-relapse mortality, relapse and overall survival will be addressed. Secondary outcomes are treatment-related toxic effects, relapse rate, event-free survival and overall survival. Patients' outcome will be analysed also by response status to ruxolitinib prior to HSCT. The paper is expected in 2019/2020.

Number of patients needed 100 in 2 years (the participation form is available at the EBMT booth)

Inclusion criteria all patients with primary or post ET/PV myelofibrosis who undergo allogeneic stem cell transplantation and have been previously treated with ruxolitinib, regardless of their response to this drug.

Exclusion criteria blastic phase of myelofibrosis

Principal investigator Nicolaus Kröger, University Medical Center Hamburg-Eppendorf, Germany

Sponsor Novartis

We invite you to join the activities of the CMWP



Chair & Data Office Leiden & Statistician

Chair Nicolaus Kröger, Department of Stem Cell Transplantation, University Medical Center Hamburg-Eppendorf, Hamburg, Germany n.kroeger@uke.de

Contact Anja van Biezen, Data Office Chronic Malignancies Working Party, Department of Medical Statistics & Bioinformatica, Postzone S-05-P, LUMC PO Box 9600, 2300 RC Leiden, The Netherlands,

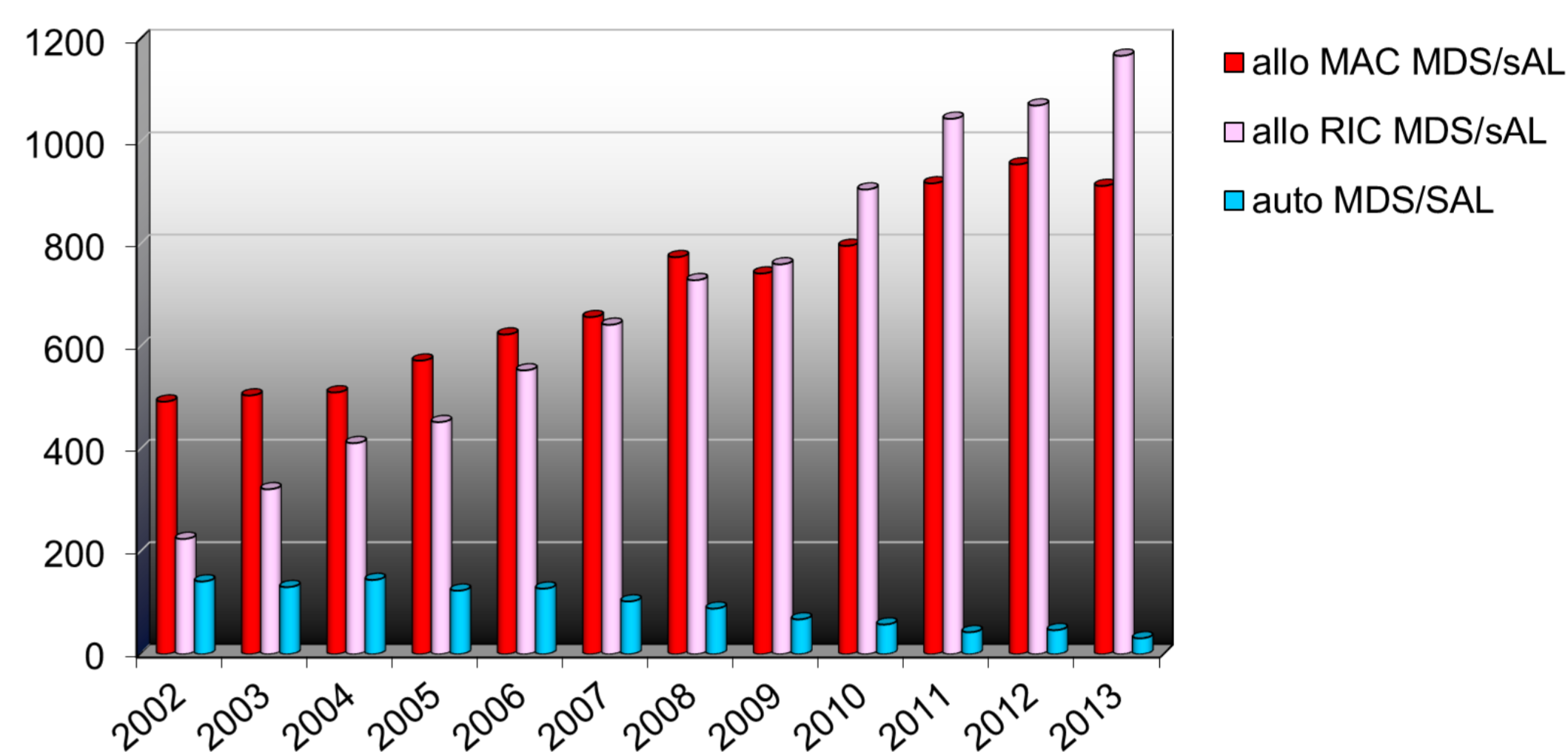
Telephone: +31 71 526 4746, Fax +49 711 4900 8723 (fax to e-mail system) clwpebmt@lumc.nl

Statistician Simona Iacobelli, Università degli Studi di Roma "Tor Vergata", Dipartimento di Medicina dei sistemi, Via Montpellier 1, 00133 Rome, Italy stat@fastwebnet.it

Subcommittee Myelodysplastic Syndrome

Chair: Marie Robin, Vice-chair: Theo de Witte

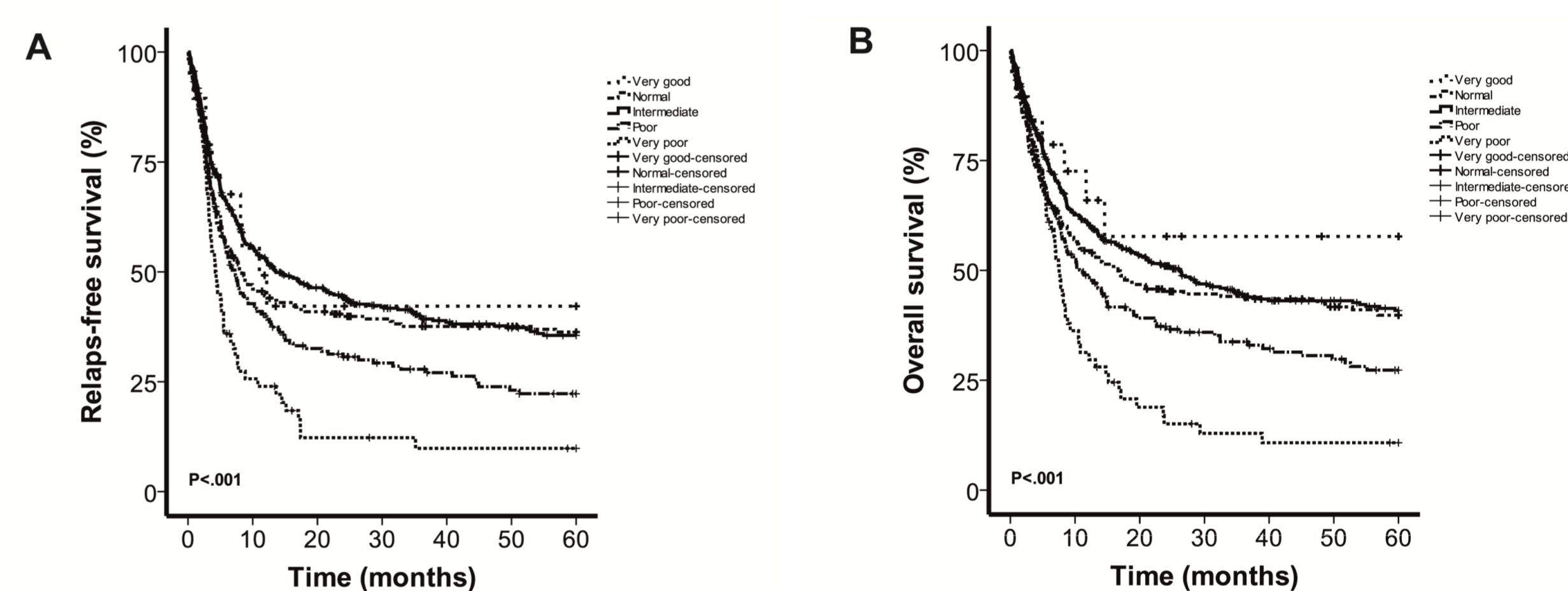
Number of MDS / sAL transplants 2002-2013



Revised IPSS Scoring Retrospective Study

Impact of the revised International Prognostic Scoring System cytogenetics and monosomal karyotype on outcome after allogeneic stem cell transplantation for myelodysplastic syndromes and secondary acute myeloid leukemia evolving from myelodysplastic syndromes: a retrospective multicenter study of the European Society of Blood and Marrow Transplantation

Koenecke C et al. *Haematologica*. 2014 Dec 31. pii: haematol.2014.116715. [Epub ahead of print]



Kaplan-Meier curves of relapse-free (A) and overall (B) survival of MDS/sAML patients after allogeneic stem cell transplantation according to 5-group-cytogenetic risk classification.

CMWP Publications

Comparison of unrelated cord blood (CB) and peripheral blood stem cell (PB) transplantation in adults with myelodysplastic syndrome (MDS) after reduced intensity conditioning regimen (RIC): a collaborative study from Eurocord and Chronic Malignancies Working Party (CMWP-EBMT). Robin M et al. *Biol Blood Marrow Transplant*. 2014 Dec 18.

Should patients with high-risk or transformed myelodysplastic syndrome proceed directly to allogeneic transplant without prior cytoreduction by remission-induction chemotherapy or hypomethylating agent therapy? de Witte TM et al. *Clin Lymphoma Myeloma Leuk*. 2014 Sep; 14S:S42-S45.

Trends in autologous hematopoietic cell transplantation for multiple myeloma in Europe: increased use and improved outcomes in elderly patients in recent years. Auner HW et al. *Bone Marrow Transplant*. 2014 Nov 10.

Impact of the International Prognostic Scoring System cytogenetic risk groups on the outcome of patients with primary myelodysplastic syndromes undergoing allogeneic stem cell transplantation from human leukocyte antigen-identical siblings: a retrospective analysis of the European Society for Blood and Marrow Transplantation-Chronic Malignancies Working Party. Onida F et al. *Haematologica*. 2014 Oct; 99(10):1582-90.

Early administration of donor lymphocyte infusions upon molecular relapse after allogeneic hematopoietic stem cell transplantation for chronic myeloid leukemia: a study by the Chronic Malignancies Working Party of the EBMT. Chalandon Y et al. *Haematologica*. 2014 Sep; 99(9):1492-8.

Should the standard dimethyl sulfoxide concentration be reduced? Results of a European Group for Blood and Marrow Transplantation prospective noninterventional study on usage and side effects of dimethyl sulfoxide. Morris C et al. *Transfusion*. 2014 Oct; 54(10):2514-22.

Unrelated cord blood transplantation for patients with primary or secondary myelofibrosis. Robin M et al. *Biol Blood Marrow Transplant*. 2014 Nov; 20(11):1841-6.

Outcome of allogeneic stem cell transplantation for patients transformed to myelodysplastic syndrome or leukemia from severe aplastic anemia: a report from the MDS Subcommittee of the Chronic Malignancies Working Party and the Severe Aplastic Anemia Working Party of the European Group for Blood and Marrow Transplantation. Hussein AA et al. *Biol Blood Marrow Transplant*. 2014 Sep; 20(9):1448-50.

Sensitivity of hematological malignancies to graft-versus-host effects: an EBMT megafile analysis. Stern M et al. *Leukemia*. 2014 Nov; 28(11):2235-40.

Allogeneic hematopoietic stem cell transplantation in patients with polycythemia vera or essential thrombocythemia transformed to myelofibrosis or acute myeloid leukemia: a report from the MPN Subcommittee of the Chronic Malignancies Working Party of the European Group for Blood and Marrow Transplantation. Lussana F et al. *Haematologica*. 2014 May; 99(5):916-2118:30.

Allogeneic stem cell transplantation for myelofibrosis with leukemic transformation: a study from the Myeloproliferative Neoplasm Subcommittee of the CMWP of the European Group for Blood and Marrow Transplantation. Alcalby H et al. *Biol Blood Marrow Transplant*. 2014 Feb; 20(2): 279-81.

Improved relapse-free survival after autologous stem cell transplantation does not translate into better quality of life in chronic lymphocytic leukemia: lessons from the randomized European Society for Blood and Marrow Transplantation-Intergroup study. de Wreede LC et al. *Am J Hematol*. 2014 Feb; 89(2):174-80.